

TÜRKİYE PUBLIC AND MUNICIPAL RENEWABLE ENERGY PROJECT (PUMREP)

**3180 kWp/ 3000 kWe Solar (Photovoltaic) Power
Plant Project
of Afyonkarahisar Municipality**

STAKEHOLDER ENGAGEMENT PLAN (SEP)

March, 2025

Sub-Project Information	
Sub-Project	Details
Name	Türkiye Public and Municipal Renewable Energy Project (PUMREP) 3180 kWp/ 3000 kWe Solar (Photovoltaic) Power Plant Project of Afyonkarahisar Municipality Stakeholder Engagement Plan (SEP)
Project Owner/ Sub-borrower	Afyonkarahisar Municipality
Financial Intermediary	İller Bankası A.Ş (İLBANK)
Prepared by	Ardea Energy Engineering & Consulting

This Stakeholder Engagement Plan has been prepared by Ardea Energy Engineering and Consulting on behalf of Afyonkarahisar Municipality within the scope of Türkiye Public and Municipal Renewable Energy Project (PUMREP) supported by the World Bank (WB) with ILBANK as the financial intermediary.

REVISION HISTORY

Version No	Version	Date of Issue	Prepared by	Submitted to
01	Initial Draft	30 October 2024	Ardea Project & Consulting	ILBANK
02	Draft	03 December 2024	Ardea Project& Consulting	ILBANK
03	Draft	03 February 2025	Ardea Project& Consulting	ILBANK
04	Draft	17 March 2025	Ardea Project& Consulting	ILBANK

Table of Content

LIST OF ABBREVIATIONS	vi
EXECUTIVE SUMMARY	1
1. INTRODUCTION	3
2. OBJECTIVE OF THE SEP	5
3. STAKEHOLDER IDENTIFICATION AND ANALYSIS	8
3.1. Methodology	8
3.2. Project Affected Parties.....	9
3.3. Disadvantaged/Vulnerable Individuals or Groups	10
3.4. Other Interested Parties	12
4. STAKEHOLDER ENGAGEMENT PROGRAM	14
4.1. Summary of Stakeholder Engagement During Project Preparation	14
4.2. Stakeholder Engagement Plan.....	15
4.3. Summary of Project Stakeholder Needs and Methods, Tools and Techniques for Stakeholder Engagement and Reporting Back	18
4.3.1. Public/community meetings	18
4.3.2. Media communication.....	18
4.3.3. Communication materials	18
4.3.4. Project tours for media, local representatives	19
4.3.5. Information desks	19
4.3.6. Proposed strategy to incorporate the view of vulnerable groups	19
4.3.7. Information disclosure.....	19
5. RESOURCES AND RESPONSIBILITIES FOR IMPLEMENTING STAKEHOLDER ENGAGEMENT ACTIVITIES	21
5.1. Resources	21
5.2. Management Functions and Responsibilities	21
6. GRIEVANCE MECHANISM	23
7. MONITORING AND REPORTING.....	29
7.1. Summary of How SEP Implementation will be Monitored and Reported.....	29
7.1.1. Indicators for Engagement with Stakeholders	30
7.1.2. Indicators for Grievance Mechanism	30
7.2. Reporting Back to Stakeholder Groups.....	30
ANNEXES	32
Annex 1. Sample Grievance and Grievance Close Out Form	32
Annex 2. Minutes of Public Consultation Meeting	35

List of the Tables

Table 1.Vulnerable Groups in the Social Impact Area	11
Table 2.Stakeholder Groups	12
Table 3.Stakeholder Engagement Plan.....	16
Table 4.Roles and Responsibilities of Key Actors/Stakeholders in SEP Implementation.....	22
Table 5.Contact Details of Afyonkarahisar Municipality	23
Table 6.Grievance Mechanism Flow Chart.....	27

List of the Figures

Figure 1.The Social Impact Area of Sub-project	7
Figure 2. Nearest Facilities and Settlements	7
Figure 3.Screenshot from Afyonkarahisar Municipality Website for Receiving Grievances..	24

LIST OF ABBREVIATIONS

AoI	Area of Influence
CIMER	Presidential Communication Center
CSR	Corporate Social Responsibility
EIA	Environmental Impact Assessment
EHS	Environment Health and Safety
E&S	Environmental and Social
ESF	Environmental and Social Framework
ESMP	Environmental and Social Management Plan
ESMS	Environmental and Social Management System
ESMR	Environmental and Social Monitoring Report
ESS	Environmental and Social Standards
ETL	Energy Transmission Line
GBV	Gender Based Violence
GDNP	General Directorate of National Property
GM	Grievance Mechanism
HS	Health and Safety
IFC	International Finance Corporation
IFIs	International Financial Institutions
ILBANK	İller Bankası A.Ş.
LMP	Labor Management Plan
OEDAŞ	Osmangazi Elektrik Dağıtım A.Ş.
MoEUCC	Ministry of Environment, Urbanization and Climate Change
NGO	Non-Governmental Organizations
OIP	Other Interested People
PAP	Project Affected People
PIU	Project Implementation Unit
RE	Renewable Energy
Sub-project	3180 kWp/ 3000 kWe Solar (Photovoltaic) Power Plant Project of Afyonkarahisar Municipality
PUMREP	Public and Municipal Renewable Energy Project
SEA/SH	Sexual exploitation and abuse/sexual harassment
SEP	Stakeholder Engagement Plan
SPP	Solar Power Plant
TEİAŞ	Turkish Electricity Transmission Corporation
WB	World Bank
WBG	World Bank Group
YIMER	Foreigners Communication Center

EXECUTIVE SUMMARY

The Public and Municipal Renewable Energy Project (PUMREP) (hereinafter the “Project”) aims to support the Government of Türkiye to scale-up Renewable Energy (RE) use in the public sector by focusing on central government buildings and municipalities. The Project will contribute to expanding the distributed RE market in public facilities help demonstrate leadership in the public sector to use sustainable energy solutions to deliver on the country’s climate mitigation commitment and enhance energy security.

The PUMREP is financed by World Bank (WB) to support introducing RE technologies in municipalities. İller Bankası A.Ş. (ILBANK) acts as the Financial Intermediary (FI). The RE installations will be primarily used to offset the overall energy consumption from public facilities (i.e. administrative buildings, water supply and water treatment, public lighting, etc.) and thus reduce the municipalities’ energy bills.

ILBANK has established an Environmental and Social Management System (ESMS) effective on 24th of Dec 2023. The ESMS is aligned with the requirements of World Bank (WB) Environmental and Social Framework (ESF, 2018) including Environmental and Social Standards (ESSs) forming part of the ESF, and E&S policies and standards of other International Financial Institutions (IFIs) ILBANK collaborates with. It will be applicable to all ILBANK projects and sub-projects financed through International Financial Institutions (IFIs).

The ESMS is aimed at ensuring systematic identification, assessment, management, monitoring, and reporting of the environmental and social (E&S) risks and impacts of the projects and sub-projects financed by the International Finance Institutions (IFIs). This process will be implemented on an ongoing basis throughout their loan duration in line with the requirements of the national legislation, international agreements and conventions ratified by Türkiye and E&S standards of lending IFIs (World Bank for the PUMREP). As a critical element of the ESMS, ILBANK has adopted and published an E&S Policy applicable to all ILBANK projects and sub-projects financed through IFIs.

The project to be financed under PUMREP includes generating approximately 4,940,051 kWh of electricity annually, which is enough to supply power to over 23,368 households. Throughout its 30-year operational lifespan, the project is expected to save the municipality more than EUR 73,03 million in energy costs and prevent the release of more than CO₂ emissions by over 5,954 tons annually. The project site is located in the Inaz neighborhood of the central district, which

is a part of Afyonkarahisar province in Türkiye. The solar power plant project is a part of Türkiye's ambitious plan to increase the share of renewable energy sources in the country's energy mix. The project site is located on a 23-hectare land allocated by Afyonkarahisar Municipality. The solar panels used in the project are of high quality and have a lifespan of 30 years. The project was designed and constructed by a team of experienced engineers and technicians. The project developer has ensured that the project adheres to international standards of quality and safety. The plant is equipped with state-of-the-art technology, including inverters, transformers, and monitoring systems. The plant is connected to the national grid which will be constructed as a part of the project.

This SEP has been formulated to ensure that sub-project affected interested parties and vulnerable groups that constitute the stakeholders are provided relevant, timely and accessible information so that they have an opportunity to express their views and concerns about the Sub-Project and its impacts.

SEP establishes a systematic approach to stakeholder engagement that will help Afyonkarahisar Municipality to identify all stakeholders and how they will be affected by the Sub-project and ensure that the Sub-project is implemented in a participatory and community-friendly manner through building and maintaining a continuous constructive relationship with them, in particular with project-affected parties.

SEP also assesses the level of stakeholder interest and support for the Sub-project and guides the relations of the Afyonkarahisar Municipality team with the stakeholders throughout the construction and operation process, enabling stakeholders' views to be taken into account in sub-project design and environmental and social performance.

SEP is designed to ensure that relevant sub-project information on environmental and social risks and impacts is disclosed to stakeholders in a timely, understandable, accessible and appropriate manner and format.

1. INTRODUCTION

PUMREP aims to support the Government of Türkiye to scale-up RE use in the public sector by focusing on central government buildings and municipalities. The Project will contribute to expanding the distributed RE market in public facilities help demonstrate leadership in the public sector to use sustainable energy solutions to deliver on the country's climate mitigation commitment and enhance energy security. Afyonkarahisar Municipality is one of the sub-borrowers and has a sub-project financed under PUMREP. Therefore, this plan is prepared to define the stakeholder engagement process including the grievance mechanism management.

The PUMREP is financed by World Bank (WB) to support introducing RE technologies in municipalities. İller Bankası A.Ş. (ILBANK) acts as the Financial Intermediary (FI). The RE installations will be primarily used to offset the overall energy consumption from public facilities (i.e. administrative buildings, water supply and water treatment, public lighting, etc.) and thus reduce the municipalities' energy bills.

The sub-project has been classified as having a moderate level of risk according to the E&S Risk Screening conducted by ILBANK in line with the ILBANK ESMS. One of the tasks under the scope of the Sub-project is the preparation of an Environmental and Social Management Plan (ESMP) and SEP in accordance with ILBANK's ESMS and WB ESF including applicable Environmental and Social Standards (ESSs), World Bank Group (WBG) General Environment Health and Safety (EHS) Guidelines and Industry Sector Guidelines, and the national legislation in force in Türkiye.

Afyonkarahisar Municipality is responsible for stakeholder engagement activities and grievance resolution, ensuring that the sub-project is carried out in an inclusive and participatory manner. The contractor, selected through a competitive bidding process, is responsible for the construction, logistics, design, test and commissioning, and provisional acceptance of the solar plant. The supervision consultant, appointed by the World Bank, is responsible for guiding all parties involved in the sub-project, including the municipality, the contractor, and ILBANK.

This Stakeholder Engagement Plan (SEP) of Afyonkarahisar Municipality is an action plan which was prepared for the Afyonkarahisar Municipality 3180 kWp/ 3000 kWe Solar (Photovoltaic) SPP sub-project and sets out methods for effective communication and interaction with stakeholders.

The solar power plant project with an installed capacity of 3180 kWp/ 3000 kWe belonging to Afyonkarahisar Municipality located in the İnaz district of Afyonkarahisar province. The plant will meet the energy of more than 23,368 households with 4,940,051 kWh of electrical energy production, save the municipality more than EUR 73,03 million energy costs within 30 years and prevent the release of more than 5,954 tons of CO₂ per year into the atmosphere.

The ultimate purpose of this SEP is to establish and maintain constructive dialogue between sub-project owner which is Afyonkarahisar Municipality and Project Affected Parties (PAP), Other Interested Parties (OIP) and vulnerable groups that are essential for the successful management of the environmental and social impacts of the Sub-project. Afyonkarahisar Municipality is fully committed to undertaking necessary engagement activities related to sub-projects in a manner that is consistent with international good practice as outlined in next sections.

The SEP provides a roadmap for the Afyonkarahisar Municipality's engagement with stakeholders and contributes to the achievement of the sub-project objectives and operation of the sub-project in a transparent, inclusive, responsive and cooperative manner. Stakeholder engagement activities will also contribute to the environmental and social assessments, by identifying the stakeholders' concerns about the sub-project, thus facilitating the effective solution of these impacts and concerns.

2. OBJECTIVE OF THE SEP

This Stakeholder Engagement Plan has been formulated to ensure that project-affected parties, other interested parties and vulnerable groups that constitute the “stakeholders” are provided relevant, timely and accessible information so that they have an opportunity to express their views and concerns about the Sub-Project and its impacts.

The objectives of the Stakeholder Engagement Plan of Afyonkarahisar Municipality are as follows:

- To establish a systematic approach to stakeholder engagement that will help Afyonkarahisar Municipality to identify all stakeholders and how they will be affected by the Sub-project and ensure that the Sub-project is implemented in a participatory and community-friendly manner through building and maintaining a continuous constructive relationship with them, in particular with all stakeholders;
- To assess the level of stakeholder interest and support for the Sub-project and to guide the relations of the Afyonkarahisar Municipality team with the stakeholders throughout the installation and operation process, enabling stakeholders’ views to be taken into account in sub-project design and environmental and social performance;
- To promote and provide means for effective and inclusive engagement with all stakeholders throughout the Sub-project life-cycle on issues that could potentially create an impact;
- To ensure that relevant sub-project information on environmental and social risks and impacts is disclosed to stakeholders in a timely, understandable, accessible and appropriate manner and format;
- To provide all stakeholders with accessible and inclusive means to raise issues and grievances and allow Afyonkarahisar Municipality to respond to and manage such grievances.

Stakeholder engagement plays a critical role for the successful completion of sub-projects, which has a wide stakeholder circle, from local people, vulnerable groups, public institutions and non-governmental organizations. SEP provides the framework for the stakeholder engagement and details the timing and methods of engagement with the different groups of stakeholders. SEP does not only identify the different stakeholder groups, but also identifies

their needs and circumstances, and how they are being affected by the sub-project. The SEP pays special attention to identified disadvantaged or vulnerable individuals or groups, and determines how to ensure their inclusion in the stakeholder engagement activities. The SEP takes into account the main characteristics and interest of the stakeholders, and the different levels of engagement and consultation that is appropriate for different stakeholders, while defining the interaction with all stakeholders, also explores the opportunities and risks brought by interaction with them.

SEP ensures a transparent, sensitive, and inclusive participation by defining the framework for Afyonkarahisar Municipality's dialogues across the sub-project's stakeholder groups, in an inclusive, non-discriminatory manner. Implementation of the SEP will:

- Generate a good understanding of the Sub-Project among those that will be affected in particular ensuring that host communities in the potentially affected areas will have a full understanding that the sub-project is of benefit to everybody within the Sub-project area,
- Ensure early identification of issues that may pose risks to the Sub-Project or its stakeholders,
- Ensure that mitigation measures are appropriate (adequate, implementable, timely, effective and efficient), and
- Establish a system for long-term communication between the Sub-Project and communities that is of benefit to all parties. This requires that the engagement strategy for the Sub-project ensure outreach to all stakeholder groups (e.g. host community), clearly informing them of the benefits from the Sub-project, and thereby reducing any social risk that misconception about the outreach of the Sub-project may cause.

SEP communication strategy vis-à-vis stakeholders also defines the mechanisms through which the stakeholders can express their concerns and transmit their grievances, and how such concerns and grievances will be responded to and resolved in a timely and adequate manner.

The social impact area of the sub-project and nearest settlements and facilities are as follows in the Figure 1 and Figure 2

Hata! Başvuru kaynağı bulunamadı.Hata! Başvuru kaynağı bulunamadı..

Figure 1.The Social Impact Area of Sub-project

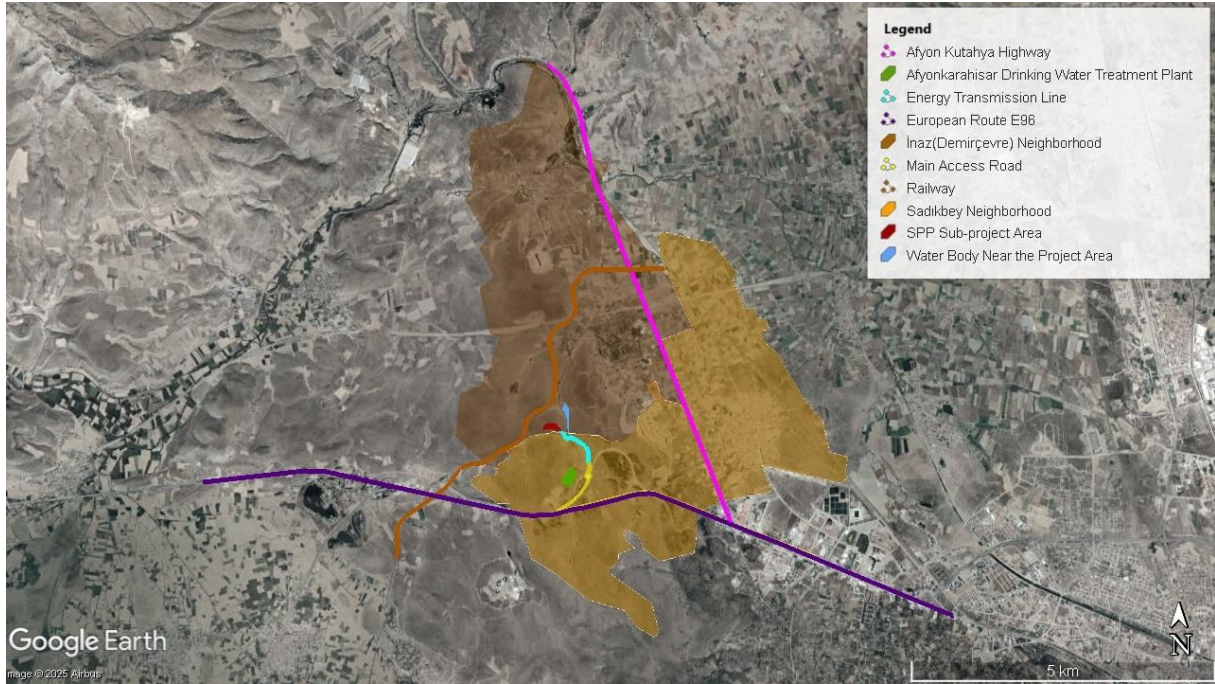
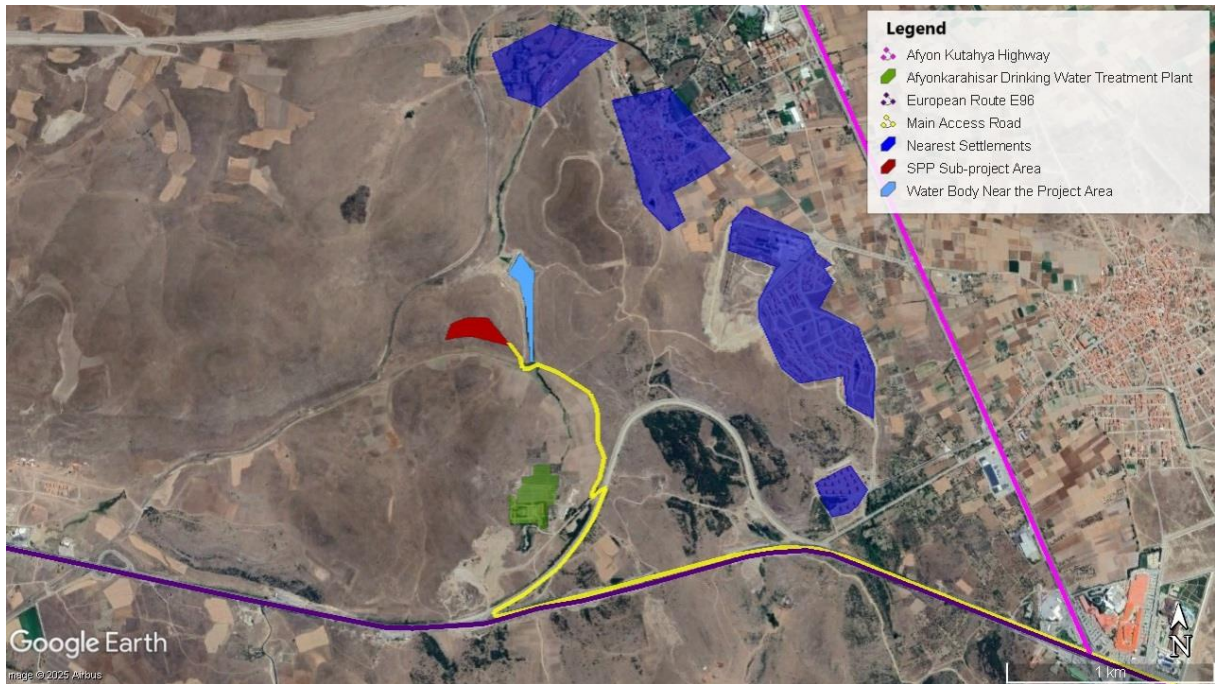


Figure 2. Nearest Facilities and Settlements



3. STAKEHOLDER IDENTIFICATION AND ANALYSIS

During the mapping process of the stakeholders, the nature of the Sub-project's impacts are identified, and the methods and frequencies of the relations to be built with stakeholders are formulated.

It is critical that particular efforts are given to identify disadvantaged and vulnerable stakeholders who may be differentially or disproportionately affected by the sub-project or who may have difficulty participating in the engagement and development processes. Stakeholder identification is also an ongoing process and will need to be regularly reviewed and updated.

3.1. Methodology

In order to meet best practice approaches, the project will apply the following principles for stakeholder engagement:

- **Openness and life-cycle approach:** Public consultations for the project will be arranged during the sub-project cycle, carried out openly, free of external manipulation, interference, coercion, or intimidation.
- **Informed participation and feedback:** Information will be widely provided to all stakeholders in an appropriate format; opportunities will be provided for communicating stakeholder feedback, and for analysing and addressing comments and concerns.
- **Inclusiveness and sensitivity:** Stakeholder identification will be undertaken to support better communications and build effective relationships during the Project cycle. The participation process for the projects will be inclusive. All stakeholders at all times will be encouraged to be involved in the consultation and project implementation process. Equal access to information of all stakeholders will be provided to all stakeholders. Sensitivity to stakeholders' needs will be the key principle underlying the selection of engagement methods. Special attention will be given to vulnerable groups that may be at risk of being left out of project benefits and the cultural sensitivities of diverse ethnic groups.
- **Flexibility:** Where social distance, cultural context, or governance factors preclude traditional face-to-face forms of engagement, the Project's stakeholder communication

strategy methodology will accommodate alternative forms of engagement, including various internet or telephone-based communication forms.

- In accordance with ESS 10, the Project has identified stakeholders, taking into account both project-affected parties and other interested parties, such as individuals or groups affected or likely to be affected by the project. Therefore, stakeholders have been identified and categorized as “project-affected parties” and “interested parties” (other individuals or groups that may have an interest in the project).

3.2. Project Affected Parties

A stakeholder is defined as any person, institution or group that may be affected by the Sub-project or has an interest in the sub-project and its impacts.

The term “project-affected parties” includes those likely to be affected by the sub-project due to actual impacts or potential risks to their physical environment, health, safety, cultural practices, well-being or livelihoods. These stakeholders may include individuals or groups, including local communities.

Residents in the İnaz Neighborhood have been selected as project affected parties since the sub-project will be established there, and settlements are in close proximity. Particularly those residing in settlements near the sub-project area, have been identified based on a detailed impact assessment. The nearest settlement is 1 km away. Additionally, the ETL passes through parcels linked to the Sadıkbey Neighborhood, meaning this area may also experience project-related impacts. Both neighborhoods could be affected by environmental factors such as increased traffic, noise, and dust during construction, leading to temporary disturbances. Furthermore, higher human mobility might put additional strain on local infrastructure and services, including healthcare facilities, markets, and the possibility of potentially disrupting residents' daily lives.

Despite these challenges, the project may also generate benefits such as local employment opportunities and economic activity. To mitigate potential negative impacts and prevent long-term social disruptions, regular information meetings should be conducted in both neighborhoods, and an effective complaint mechanism should be implemented. Additionally, environmental mitigation measures during the construction phase must be closely monitored.

As part of the stakeholder engagement process, local landowners have been consulted through the Sadıkbey Mukhtar, and they have been informed about the solar power plant project and its potential impacts. According to their statements, they do not expect any negative effects from

the project. Additionally, they have been informed about the complaint mechanism and advised that they can report any potential issues and share their opinions with the relevant authorities.

Other facilities that could be affected include the Afyon Drinking Water Treatment Plant, which is located along the project route, and a nearby railway crossing, and artificial dam of which have been considered in the assessment.

The project affected parties, including individuals, groups and communities, who will cooperate and consult on and during the sub-project are as follows:

- İnaz Neighborhood
- Sadıkbey Neighborhood
- Sensitive Receptors (The Afyonkarahisar Drinking Water Treatment Plant, The Railway , The Artificial Dam , Nearest Settlements)

The parties that affected by the project are shown in Figure 1 as İnaz Neighborhood , Sadıkbey Neighborhood and as facility and other sensitive receptors located near sub project area in Figure 2.

3.3. Disadvantaged/Vulnerable Individuals or Groups

In the communities under potential impact of the sub-project, there will be direct stakeholders, some of whom may be vulnerable groups. Disadvantaged or vulnerable individuals or groups are those who often do not have a voice to express their concerns or understand the impacts of a sub-project, and who may have particular limitations in participating in and/or understanding the sub-project information or participating in the consultation process. Limitations may relate to language differences, lack of transportation to events, accessibility of venues, lack of understanding of a consultation process, and difficulties in accessing information. Vulnerable groups may be disproportionately affected by the adverse impacts of the sub-project.

Vulnerable individuals/groups may comprise of refugees, household head women, the disabled individuals, people with chronic illnesses or in need of special care and the people over 65 years of age. Vulnerable groups are important stakeholders, and it is a priority to find modes of engagement in terms of language, access, venue and time which will enable them to participate fully in the stakeholder engagement activities. Likewise, it is important to consider how these groups normally access information, through which media and language – and whether there are organizations which already work with them, and who can be used for outreach.

Moreover, the equal participation of disadvantaged/vulnerable/ groups in the stakeholder engagement activities of the sub-project at par with other stakeholder groups is also expected. Their participation, inputs and needs will inform sub-project design and implementation.

In the sub-project context, vulnerable individuals/groups would include:

1. **Disabled individuals:** Construction activities can disrupt accessibility routes and restrict mobility. They may have special needs for access to participation activities. There are disabled individuals and people with chronic illnesses or in need of special care in the neighborhoods in AoI.
2. **People over 65 years of age:** Construction activities can disrupt older people's daily routines and access to basic services, potentially causing discomfort or stress. They may have special needs for access to participation activities.
3. **Immigrants and Refugees:** Refugees may have difficult living conditions and limited resources, making them more susceptible to the impacts of the sub-project. Their legal status and lack of access to certain services can also heighten their vulnerability.
4. **People with chronic illnesses or in need of special care:** Construction-related activities (traffic, damage to infrastructure, etc.) can affect access to basic services and routines, exacerbate health problems or cause discomfort.
5. **Female head of households:** Female heads of households with special needs may have limited participation in consultations.

The table below was filled in with the information received from the Mukhtar of İnaz Neighborhood and the Afyonkarahisar Municipality.

Table 1. Vulnerable Groups in the Social Impact Area

Number	İnaz Neighborhood	Sadıkbey Neighborhood
Refugees	None	None
Disabled individuals	10	20
People over 65 years of age	200	500
People with chronic illnesses or in need of special care	None	5-6
Female head of households	20	5

3.4. Other Interested Parties

Other interested parties include individuals, groups and others who may have an interest in the sub-project because of their location, proximity to natural or other resources, or the sector or parties involved in the sub-project. This may include local government officials, community leaders, media and civil society organizations, particularly those working in or with affected communities.

Maintaining regular relationships with media stakeholders is sufficient to provide regular information at local and national level in Afyonkarahisar Province. In all cases, the media plays an important role in informing the public and building public perception of the sub-project.

Stakeholder groups within the scope of the sub-project are as follows in Table 2.

Table 2. Stakeholder Groups

Stakeholder Group	Cause of Impact/Risk	Level of Interest	Level of Influence
Project Affected Parties	<ul style="list-style-type: none"> Local communities (İnaz , Sadıkbey Neighborhoods , Nearest Settlements (Local Landowners) 	High	High
	<ul style="list-style-type: none"> Business (The Afyonkarahisar Drinking Water Treatment Plant) 	Medium	High
	<ul style="list-style-type: none"> The railway 	High	Medium
	<ul style="list-style-type: none"> Water body (Artificial dam) 	High	Low
	<ul style="list-style-type: none"> Workers (including supply chain) to be employed for the sub-project activities 	High	High

Vulnerable individuals or groups	<ul style="list-style-type: none"> • Disabled individuals; • People over 65 years of age; • Female head of households. 	Vulnerable groups might be disproportionately affected by adverse sub-project impacts	High	High
Other Interested Parties	<ul style="list-style-type: none"> • NGOs 	Environmental and social impacts of the sub-project (depending on NGO's field).	High	Low
	<ul style="list-style-type: none"> • Governmental Bodies <ul style="list-style-type: none"> ○ Ministry of Industry and Technology, ○ Ministry of Energy and Natural Resources, ○ Afyonkarahisar District Governorship, Governorship of Afyonkarahisar, ○ Afyonkarahisar Provincial Directorate of Environment, Urbanization and Climate Change • Local administration • Press Agencies • Local Newspapers 	A positive impact is expected with the energy generated from the subproject. Government agencies may be involved in the permitting process, land acquisition process or in organizing consultations with communities.	High	Medium

4. STAKEHOLDER ENGAGEMENT PROGRAM

4.1. Summary of Stakeholder Engagement During Project Preparation

As part of the Afyonkarahisar Municipality Solar Power Plant (SPP) Project, which is being implemented under the Public and Municipal Renewable Energy Project (PUMREP) with financial support from the World Bank and coordination by İLBANK, a Public Consultation Meeting was organized on April 28, 2025, at 2:00 PM in the Demirçevre (İnaz) Neighborhood. The objective of the meeting was to inform stakeholders about the project, promote active engagement with affected and interested parties, and gather their feedback for integration into the project design and the Environmental and Social Management Plan (ESMP).

To ensure wide participation, the meeting was announced through multiple channels, including the official website of Afyonkarahisar Municipality, national and local newspapers, as well as brochures distributed to neighborhood headmen's offices and posted on public notice boards.

During the meeting, representatives from Afyonkarahisar Municipality and the Ardea Project Consulting Team delivered detailed presentations on the subproject's objectives, technical aspects, timeline (expected to be completed within six months), environmental and social impacts, proposed mitigation measures, and the grievance mechanism that will be implemented during both the construction and operational phases. The significance of the project in promoting renewable energy use and combating climate change at the local level was emphasized.

Key topics presented and discussed included:

- General overview of the SPP Project and its benefits for Afyonkarahisar energy needs,
- Location and technical specifications of the project site,
- Environmental and social risks and mitigation strategies,
- Transparent grievance redress mechanism for stakeholders,
- Land characteristics and compliance with national and World Bank safeguards.

During the interactive session, stakeholders raised several questions, including:

- Possible impacts on local grazing activities,

- Potential damage to agricultural land from the energy transmission line,
- Dust and noise emissions during construction works.

In response, project representatives clarified the following:

- The project site consists of rocky and uneven terrain and is not suitable for grazing; furthermore, adequate alternative grazing areas are available nearby,
- The energy transmission line will be installed underground within Treasury-owned land, with no intervention on privately owned agricultural areas,
- Dust and noise impacts will be minimized through water spraying, time-restricted working hours, and the use of low-noise machinery.

A total of 13 participants attended the meeting, which lasted approximately 40 minutes. The session demonstrated strong interest and engagement from the local community and provided important feedback that will contribute to the effective implementation of the ESMP and SEP. The detailed Minutes of the Public Consultation Meeting are provided in Annex 2.

4.2. Stakeholder Engagement Plan

The main goals of the stakeholder engagement program and the planned schedule for the various stakeholder engagement activities are to describe at what stages throughout the Sub-project's life these activities will take place, and with what periodicity. Where decisions on public meetings, locations, and timing of meetings have not yet been made, information is provided on how people will be made aware of forthcoming opportunities to review information and provide their views.

SEP ensures preparation of an open profile of the stakeholders and clear sight of the relationships between the sub-project and stakeholders. Meeting with all of the stakeholders listed in the matrixes on the underlined subject matters at the pre-determined timeline is crucially important. The frequency of the meetings can be increased when needed.

SEP in Table 3 presents the nature and level of stakeholders' interest in the sub-project and the ways the engagement will be conducted, the engagement frequency and the PIU of Afyonkarahisar Municipality and the following matrix is the tabulated version of this program.

The parts analysed by the matrix are as follows in Table 3:

- Subject of Meeting/Interview identifies the subject matters that need to be discussed with the stakeholder at the predetermined frequency.
- Method of Information specifies the communication tools and ways that may be used for engagement, such as face-to-face meetings, website announcements, SMSs, and brochures, etc.
- Frequency establishes a calendar for engagement.

The responsible party/person is required to be determined by the Afyonkarahisar Municipality representatives. The Afyonkarahisar Municipality will be responsible for implementing the stakeholder engagement process even in case that actual stakeholder engagement works may be contracted to a third party.

The following stakeholder engagement program represents key characteristics, preferred notification means and specific needs for stakeholder groups.

Table 3.Stakeholder Engagement Plan

Stakeholder group	Key characteristics	Preferred notification means	Frequency	Specific needs
Directly Affected Communities				
Residents and mukhtar in affected settlement	İnaz Neighborhood Sadıkbey Neighborhood	<ul style="list-style-type: none"> • Web site • Flyers, posters • Announcements • Info desk at Afyonkarahisar municipality • Announcements by mukhtar • Press release • Social media • Face-to-face information meetings • Brochures 	<p>-Before the construction phase started</p> <p>- Monthly checks can be made after construction begins.</p> <p>-Also, when needed (significant change occurs)</p>	-Accessible consultation opportunities
Vulnerable groups in settlements in AoI	<p>-Disabled Individuals</p> <p>-People over 65 years of age</p> <p>-Female head of households</p>	<ul style="list-style-type: none"> • Face-to-face consultations • Telephone interviews • Social media • Web site of Afyonkarahisar Municipality • Flyers, posters • Announce • Info desk 	<p>-Before the construction phase started</p> <p>-Monthly checks can be made after construction begins.</p> <p>-Also, when needed (significant change occurs)</p>	<p>-Transportation support to meetings</p> <p>-Special face to face meetings,</p> <p>- Sign language support during meetings.</p>

Stakeholder group	Key characteristics	Preferred notification means	Frequency	Specific needs
Sub-project workers	-Workforce during construction and operation	<ul style="list-style-type: none"> • Brochure • Information brochures • Grievance mechanism 	-Monthly	- Toolbox trainings
Facility on the Road Route of the Sub-Project Area	-Afyonkarahisar Drinking Water Treatment Plant	<ul style="list-style-type: none"> • Information brochures • Grievance mechanism • Information meetings • Face-to-face consultations 	-Before the construction phase started -When needed (significant change occurs)	-Accessible consultation opportunities
Railway	-Critical and sensitive infrastructure nearby.	<ul style="list-style-type: none"> • Official letters, meetings with railway authorities 	As needed during construction phases	Clear information on construction activities and schedules, noise and vibration management measures, and risk mitigation plans.
Land owners (Near subproject area)	-Local landowners around the subproject area, mainly farmers who use their land for agricultural purposes. They may have concerns about land use, environmental impacts, and access to their properties.	<ul style="list-style-type: none"> • Meetings through the Mukhtar, official notices, community gatherings, • Written materials (brochures, letters) 	Before the construction phase started -When needed (significant change occurs)	Clear communication on project impacts, assurance of continued land access, and an effective complaint mechanism
Water Body (Artificial Dam)	Managed water source for irrigation or storage; sensitive to water quality and visual impacts.	<ul style="list-style-type: none"> • Letters, community bulletins, updates to local government 	Quarterly or at major project milestones	Assurance of dust and air pollution control, water quality monitoring reports, and visual impact mitigation measures.
Directly Involved Public Administrations				
National Level	-Public institutions	<ul style="list-style-type: none"> • Face to face meeting • Correspondence 	-Quarterly	-In accordance with the workflow
Provincial Level	-Public institutions	<ul style="list-style-type: none"> • Face to face meetings • Telephone • Correspondence 	-Quarterly	-In accordance with the workflow
Indirectly Affected Communities				
All residents in Afyonkarahisar	-All residents under coverage of Afyonkarahisar Municipality services	<ul style="list-style-type: none"> • Web site • Social media • Flyers, posters 	-Yearly	-Accessible informing
All vulnerable groups in Afyonkarahisar	-All vulnerable groups under coverage of Afyonkarahisar Municipality services	<ul style="list-style-type: none"> • Web site • Social media • Flyers, posters 	-Yearly	-Accessible and appropriate informing
Indirectly Involved Public Administrations				

Stakeholder group	Key characteristics	Preferred notification means	Frequency	Specific needs
National Level	-Government authorities	<ul style="list-style-type: none"> • Correspondence 	-Yearly	-In accordance with the workflow
Provincial Level	-Government authorities	<ul style="list-style-type: none"> • Correspondence 	-Yearly	-In accordance with the workflow
District Level	-District Municipalities Mukhtars of Indirectly Affected Neighborhoods	<ul style="list-style-type: none"> • Correspondence 	-Yearly	-In accordance with the workflow
Media/Press				
Press Agencies	-Press agencies	<ul style="list-style-type: none"> • Face to face meeting • Telephone 	-Yearly	-Prior notification
Local Newspapers	-Local newspapers	<ul style="list-style-type: none"> • Face to face meeting • Telephone • Press releases • Interviews 	-Yearly	-Prior notification

4.3. Summary of Project Stakeholder Needs and Methods, Tools and Techniques for Stakeholder Engagement and Reporting Back

4.3.1. Public/community meetings

Following the approval of the ESMP by Afyonkarahisar Municipality, a Public Consultation Meeting will be held with the participation of the resident of İnaz and Sadıkbey Neighborhoods in the social impact area. The meeting will be held to provide information about the project, answer the questions of the local people and express their concerns, if any. This meeting will be an important step in minimizing the social impacts of the project and strengthening cooperation with the local community.

4.3.2. Media communication

Information will be widely shared through various media channels, as local media usage is prevalent among individuals of different ages and backgrounds in the communities impacted by the sub-project. These channels will include local radio and TV stations, newspapers, social media, community websites and forums, SMS and mobile notifications, public notice boards, as well as community meetings or public announcements. The municipality's communication platforms and channels will also be utilized to ensure broad dissemination of information.

4.3.3. Communication materials

Written information will be made available to the public through various communication tools and materials such as brochures, flyers, posters, etc. Afyonkarahisar Municipality will also regularly update its websites with sub-project key updates and reports on the environmental and social performance of the Sub-project. The websites will also provide information on the grievance mechanism for the Sub-project (see section 4.3.7 below). All stakeholder engagement processes will be recorded, monitored, evaluated and reported with consultation and backup documents such as participant lists, photographs, records, etc.

4.3.4. Project tours for media, local representatives

If needed, site visits or demonstration tours will be organized for selected stakeholders from media organizations or local government during all phases including construction, operation and decommissioning of the sub-project.

4.3.5. Information desks

The Information Desk at Afyonkarahisar Municipality building will provide information to local residents on stakeholder engagement activities, construction updates, contact information for complaint methods, etc. Brochures and flyers on social and environmental issues related to the various sub-projects will be available at these information desks.

4.3.6. Proposed strategy to incorporate the view of vulnerable groups

The Sub-project will take special measures to ensure that disadvantaged and vulnerable groups' (women, elder and disabled) have equal opportunity to access information, provide feedback, or submit grievances.

Vulnerable stakeholder identification is also an on-going process and will require regular review and update. Accordingly, engagement methods can be tailored to inform women, elder and disabled to understand their views and concerns in an appropriate manner. Focus group meetings, women meetings will be dedicated specifically to vulnerable groups may also be envisaged as appropriate.

4.3.7. Information disclosure

From the early stages of the sub-project lifecycle, information about the sub-project and the grievance mechanism will continue to be disclosed to the public through individual or group meetings, printed materials, and notice boards, as well as SMS and WhatsApp group messages. The current Afyonkarahisar Municipality website (<https://www.afyon.bel.tr>) and consultation meetings will be used to disclose sub-project documents.

The sub-project documents, including the ESMP and SEP, will be available at the Afyonkarahisar Municipality office and district municipality offices. Sub-project posters, brochures, and information related to the grievance mechanism and the sub-project will be provided in local areas such as the İnaz and Sadıkbey mukhtar's office, coffee houses, or mosques. Sub-project updates (including news on construction activities and basic environmental and social data) will also be posted on the homepage of Afyonkarahisar Municipality's website. Additionally, details about the sub-project Grievance Mechanism will be posted on the website. To enable stakeholders to submit their complaints, an electronic grievance notification system will be established via email (info@afyon.bel.tr) and a communication hotline accessible at 444 03 83. Afyonkarahisar Municipality will regularly update and maintain its website.

5. RESOURCES AND RESPONSIBILITIES FOR IMPLEMENTING STAKEHOLDER ENGAGEMENT ACTIVITIES

5.1. Resources

Afyonkarahisar Municipality will mobilize human and financial resources to implement the SEP and manage the Grievance Mechanism (GM). The SEP and GM activities will be overseen by Afyonkarahisar Municipality. As outlined in this SEP, the municipality will primarily be responsible for coordinating stakeholder engagement activities with the Contractors. The collection of complaints, inquiries, and feedback will be directly managed by the E&S Specialist of Afyonkarahisar Municipality and the Contractors.

The financial resources mobilized by Afyonkarahisar Municipality will include:

- A project-specific page on the website
- An electronic grievance database
- A record of stakeholder engagement
- Printed materials (guidelines, brochures, posters, etc.) to be used in accordance with SEP requirements.

5.2. Management Functions and Responsibilities

Afyonkarahisar Municipality PIU is the main responsible party for the implementation of the SEP. Afyonkarahisar Municipality PIU will have designated staff responsible for SEP and GM. The roles and responsibilities of these stakeholders are summarized in Table 4 below.

Table 4.Roles and Responsibilities of Key Actors/Stakeholders in SEP Implementation

Institution	Roles and Responsibilities
Afyonkarahisar Municipality Grievance Mechanism Contact Person	<ul style="list-style-type: none"> • Planning and implementation of the SEP; • Leading stakeholder engagement activities in close collaboration with the ILBANK PMU; • Management and resolution of grievances; • Consultation on specific SEP activities; • Announcing the important construction activities (such as road closures and service interruptions); • Reporting on implementation of SEP activities to ILBANK PMU; • Executing defined grievance mechanism in the SEP properly and informing ILBANK PMU about the overall implementation status.
ILBANK	<ul style="list-style-type: none"> • Monitor and control whether Afyonkarahisar Municipality fulfills its responsibilities. • Accelerating and monitoring the formation of PIUs to ensure proper implementation of the processes related to the grievance mechanism and stakeholder engagement issues. • Coordinating the parties for proper implementation of the processes regarding the grievance mechanism and stakeholder engagement issues
E&S Consultant	<ul style="list-style-type: none"> • E&S Consultant is responsible for preparing the Environmental and Social Assessment Study Reports, i.e. ESMP and SEP, for the approval of ILBANK and WB. • Taking a part in organizing the ESMP introduction meeting to be held for the public and NGOs as part of the Sub-project; and • Finalizing the reports as per the concerns/opinions of the stakeholders.
OEDAŞ	<ul style="list-style-type: none"> • Cooperating with Afyonkarahisar Municipality for the SEP in relation with construction of the Energy Transmission Line and associated land acquisition.
Contractors/sub-contractors	<ul style="list-style-type: none"> • Inform Afyonkarahisar Municipality on any issues related to engagement with stakeholders. • Transmit and resolve complaints caused by the construction activities in close collaboration with and as directed by Afyonkarahisar Municipality. • Inform ILBANK PMU and Afyonkarahisar Municipality on important construction activities (such as road closures and service interruptions) and of any issues related to their engagement with stakeholders. • Maintaining contact with the Afyonkarahisar Municipality GM Focal Point for the follow up of the grievances, • Organizing and carrying out the Stakeholder Engagement/Consultation Meetings and related events regarding public information sharing, • Informing local communities of any environmental and social issues (e.g., noise, vibration, water quality monitoring, community health and safety, etc.), • Developing and implementing a grievance mechanism both for the E&S performance of the sub-project and for their workforce including sub-contractors, prior to the start of works in compliance with Afyonkarahisar Municipality's GM requirements.
National Government Departments	<ul style="list-style-type: none"> • Participate in the implementation of some activities in the SEP; such as licenses, permits, approvals. Make available and engage with the public on the Sub-project Reports.

A tentative budget for implementing the stakeholder engagement plan will be covered by Afyonkarahisar Municipality.

6. GRIEVANCE MECHANISM

In accordance with the international requirements, a grievance mechanism will be established by Afyonkarahisar Municipality in order to receive, resolve and follow the concerns and complaints of the Sub-project affected communities and the workforce. Grievance Mechanism (GM) as per WB will be implemented by Afyonkarahisar Municipality throughout the lifetime of the sub-project including pre-construction, construction, and operation phases. Afyonkarahisar Municipality will be accessible interested parties and vulnerable and respond to all grievances (complaints, requests, opinions, suggestions) at the earliest convenience. The most important point in the grievance mechanism is to ensure that all grievances are effectively received, recorded, resolved and responded. Moreover, on the basis of their contents, by Afyonkarahisar Municipality PIU and that the corrective/regulatory action to be taken is acceptable to GMCP of Afyonkarahisar Municipality PIU. Such responses to the grievances would be satisfactory for both parties and activities would be followed and the complainants would be informed on the outcomes of the corrective activities. Additionally, the grievance mechanism will be designed to allow anonymous to be addressed and handled. The Grievance Form in Annex 1. Sample Grievance and Grievance Close Out Form will be utilized in the sub-project and allow submission of anonymous grievances. In addition, the sub-project's GM will include a channel to receive and address confidential complaints related with Sexual Exploitation and Abuse/Sexual Harassment (SEA/SH) with special measures in place.

Afyonkarahisar Municipality PIU will be responsible for building close relationships with all stakeholders. The contact detailed is given in Table 5.

Table 5. Contact Details of Afyonkarahisar Municipality

Web page	Phone	Address for Official Letter	E-mail
https://www.afyon.bel.tr	Call Center 444 03 83	Karaman Mahallesi Albay Reşat Çiğiltepe Caddesi No:11 03200 Merkez/Afyonkarahisar	info@afyon.bel.tr

Afyonkarahisar Municipality actively uses the website <https://ecozum.afyon.bel.tr/WebBasvuru/sikayetformu#/> for managing complaints, suggestions, and requests from the public in a more efficient digital manner. Through this platform, users can submit their complaints and suggestions, facilitating faster communication with the municipality. Please see Figure 3

Hata! Başvuru kaynağı bulunamadı.Hata! Başvuru kaynağı bulunamadı..

Figure 3.Screenshot from Afyonkarahisar Municipality Website for Receiving Grievances

Şikayet - Talep

Ad *

Soyad *

Cep Telefonu *

Başvuru Metni *

Dosya

Dosyaları Seç Dosya İsmi

Kişi Bilgilerimi Gizle

mvfk5

Resimdekileri yazın

Başvuru Oluştur

In addition to Afyonkarahisar Municipality communication tools, the following communication channels can be used to convey complaints:

- Points selected for grievance boxes (for worker grievances) at the construction sites and for the mukhtar of the relevant Neighborhood and/or grievance boxes,
- Direct contact with and site managers at construction sites,
- Meetings and formal/informal consultations.

If any worker and/or public stakeholders and affected groups are not satisfied with the solutions offered by the E&S Team in Afyonkarahisar Municipality PIU or have requests for a higher-level explanation, grievances / requests / suggestions can be shared at the contact addresses given below. Also, a separate grievance mechanism is provided exclusively for workers, focusing on workplace concerns like safety, conditions, and labor rights. Workers can submit grievances confidentially to their supervisor, the HR Department, or the E&S representative.

ILBANK has established a transparent and comprehensive GM in September 2021 in order to receive, evaluate and address grievances pertaining to every international project it finances, and relevant mechanism will be in place during the course of the Sub-project. Complainants

may - if they wish - submit their grievances to ILBANK as a higher authority through the following communication tools:

- **Website:** <https://www.ilbank.gov.tr/form/bilgiedinmeuluslararasi>
- **E-mail:** bilguidb@ibank.gov.tr and etikuidb@ilbank.gov.tr
- **Phone number:** +90 312-508 79 79

Address for Official Letter: ILBANK Department of International Relations, GM Team (letters must be marked as personal or confidential) [Emniyet Mahallesi Hipodrom Caddesi No:9/21 Yenimahalle/ANKARA](#) Presidency's Communication Center: The Presidency's Communication Centre (CIMER) has been providing a centralized complaint system for Turkish citizens, legal persons and foreigners. CIMER will be available to sub-project stakeholders as an alternative and well-known channel for conveying their sub-project-related grievances and feedback directly to state authorities.

- www.cimer.gov.tr
- Call Centre: 150
- Phone number: +90 312 525 55 55
- Fax number: +90 0312 473 64 94
- Mail addressed to Republic of Turkey, Directorate of Communications
- Individual applications at the community relations desks at governorates,
- Ministries and district governorates

Foreigners Communication Center: The Foreigners Communication Center (YIMER) has been providing a centralized complaint system for foreigners. YIMER will be available to sub-project stakeholders as an alternative and well-known channel for conveying their sub-project-related grievances and feedback directly to state authorities.

- www.yimer.gov.tr
- Call Centre: 157
- Phone number: +90 312 5157 11 22
- Fax number: +90 0312 920 06 09
- Mail addressed to Republic of Turkey, Directorate of Communications

- Individual applications at the Republic of Turkey General Directorate of Migration Management

Any grievance and feedback lodged/conveyed through CIMER and/or YIMER related to the sub-project will be registered in the GM database and managed as per GM Procedures, as relevant, by observing the requirements stipulated by the Law on the Protection of Personal Data (Law No. 6698, 2016) and WB Grievance Redress Mechanism.

An English version of the grievance forms that will be filled in Turkish are available in Annex 1. Sample Grievance and Grievance Close Out Form

The operational flow of Grievance Mechanism for the stakeholders is as follows:

1. Tools of information are prepared for grievance mechanism. Local people and stakeholders are informed. The tools are defined as follows:
 - a. Web page
 - b. E-mail address
 - c. Brochure
 - d. Public meetings
 - e. Telephone
 - f. Frequently Asked Questions (Brochure, web page, bulletin, etc.)
2. There are multiple channels for submitting grievance and concerns. Grievances can be submitted by the following channels:
 - a. Telephone (Call Center and units)
 - b. Personal visit to Afyonkarahisar Municipality head office
 - c. Application through the grievance boxes (installed at the Afyonkarahisar Municipality Units)
 - d. Through concerned public administrations (district governorship, municipality, mukhtars of İnaz and Sadıkbey Neighborhoods)
 - e. E-mail
 - f. Meetings
 - g. Through staff and local communication desk of Afyonkarahisar Municipality
 - h. By written petition to Afyonkarahisar Municipality
 - i. During site visits and miscellaneous

- j. Application by grievance forms and letters through the grievance boxes to be placed at Afyonkarahisar Municipality, ILBANK and contractor's sub-project site offices
- 3. All the grievances received through the above channels are collected and recorded by, Grievance Mechanism Contact Person (GMCP).
- 4. The grievances received are recorded in the database and maintained (Please see Annex 1 for template of grievance database)
- 5. Requests that require urgent remedy and/or support will be responded to and given support for within the same day, and all outstanding grievances/requests will be recorded within 2 business days, and reviewed and assessed within 10 business days, and concluded not later than 15 business days. Corrective actions will be taken to resolve the grievance.

GMCP of Afyonkarahisar Municipality prepares the draft response and submits it to the approval of the Sub-project Management.

- 6. For the cases relevant to sexual exploitation and abuse/sexual harassment (SEA/SH) at workplace or any potential child abuse in the sub-project site, the complaint will be directed by the GM focal point (based in ILBANK headquarter) to relevant legal authorities/service providers. The sub-project Owner will provide training to employees and subcontractors before the construction phase begins. Behavioral codes, including compliance with rules addressing gender-based violence, sexual harassment, sexual exploitation, and abuse, will be explicitly stated in the terms of the personnel's contract. The consequences of non-compliance with these codes will be clearly outlined in the contract. Measurement and evaluation should be conducted at the end of the training provided to the personnel.
- 7. A monitoring- evaluation system is established for the grievances. The monitoring process of grievances is recorded in the monitoring and evaluation system.

Table 6. Grievance Mechanism Flow Chart

Grievance Process	Requirement / Action
Submission of a complaint	Receiving the grievance by any communication channel explained above. (At this point, if the complaint is a sensitive complaint involving child abuse, sexual harassment abuse or Gender Based Violence (GBV) immediate action will be taken within 2days after receiving of the complaint. For the cases relevant to sexual exploitation and abuse/sexual harassment at workplace or any potential child abuse in the Sub-project sites, the complaint will be directed by the GM focal point (based in ILBANK headquarter) to relevant legal authorities/service providers such as Ministry of Family and Social Services and Prosecutors Office.”)
Registration of complaint	Registering/recording through making an entry in the sample grievance register table. All the complaints will be registered within two working days and feedback will be given to the complainant. If the complainant requests that this complaint be treated anonymously, this complaint will be recorded anonymously and the request will be met.
Forwarding of complaint	The complaint is forwarded to relevant persons (site manager on construction sites and experts of the PIU) responsible for handling the complaint in not later than three working days upon receiving the complaint (except for any emergent complaint, which would be handled as appropriate).
Evaluation of a complaint	Evaluating the complaints within 10 working days and determining whether the complaint meets the admissibility criteria. If the complaint is not valid/not related to the project, the relevant explanation will be provided to the complainant.
Response for a complaint	<p>If the complaint is valid, identifying and taking corrective measures for resolving the complaint in not later than 15 working days upon receiving. If resolving the complaint would take longer, a partial response could be provided to the complainant and fill the Grievance Closeout Form.</p> <p>All comments and complaints will be responded to either verbally or in writing, in accordance with the preferred method of communication specified by the complainant, if contact details of the complainant are provided.</p> <p>At this point, it should be noted that the action taken and the result of this anonymously recorded grievance should be shared on the Afyonkarahisar Municipality website, so that anonymous complainants is informed about their complaint and the results.</p>
Recording the result of a complaint	Recording the result of the complaint in register table.
Right to Appeal	<p>If the complaint cannot be resolved with the existing process, applicants can always apply to relevant legal institutions. Such institutions can be summarized as follow:</p> <ul style="list-style-type: none"> • Civil Courts of First Instance • Administrative Courts • Commercial Courts of First Instance • Labor Courts, and • Ombudsman (https://ebasvuru.ombudsman.gov.tr/)

7. MONITORING AND REPORTING

7.1. Summary of How SEP Implementation will be Monitored and Reported

Monthly summaries of complaints, queries and related incidents, together with the status of implementation of corrective/preventive actions, shall be prepared by the Contractor during the construction phase and by Afyonkarahisar Municipality during the operation phase. These summaries shall be included in the monthly ESMRs to be prepared by the Contractor during the construction phase of the subproject for submission to the Afyonkarahisar Municipality. Furthermore, the Contractor shall promptly forward the complaints to the Subproject Owner in addition to summarizing them in the monthly ESMRs. The monthly summaries/reports shall be a means of assessing both the number and nature of complaints (if any) and the ability of Afyonkarahisar Municipality and the Contractor(s) to address the complaints in a timely and effective manner. As for incidents, the Contractor shall be responsible for promptly reporting to the Subproject Owner any unexpected events such as environmental, social and labor issues or accidents, incidents or loss of time and maintaining an incident log on site throughout the life of the subproject.

Monthly ESMRs will be prepared by the Contractor for submission to Afyonkarahisar Municipality. Quarterly ESMRs and six-monthly sub-project Progress reports will be prepared by Afyonkarahisar Municipality and submitted to ILBANK together with the Complaint Register. Six-monthly ESMRs and sub-project Progress reports will be prepared by ILBANK for submission to WB. These reports will include a summary of the sub-project's performance in health, safety, environmental and social issues management, grievance mechanism and stakeholder engagement activities conducted within the specified period. All efforts for effective implementation of the GM will be documented using forms and records in the sub-project specific SEP and will be evaluated and reported against the specified KPI targets. It should also be noted that the personal information of the complainant using the GM will remain confidential and will never be shared in these reports.

7.1.1. Indicators for Engagement with Stakeholders

- Number and location of formal and informal meetings with Direct & Indirect Stakeholders and Interested Groups
- Number and location of formal and informal meetings with Disadvantaged/Vulnerable groups specify which group (women, elderly, disabled), number of men and women that attended each of the meetings above
- Number of local and refugees attending each of the meetings above
- For each meeting, number and nature of comments received, actions agreed during these meetings, status of those actions, and how the comments were included in the Sub-projects environmental and social management system.

Minutes of meetings of formal meetings and summary note of formal and informal meetings will be annexed to this SEP and the environmental and social quarterly reports as evidence.

7.1.2. Indicators for Grievance Mechanism

- Number of grievances received in reporting period
- Number of grievances received from stakeholders, and sorted and analyzed according to category of grievance,
- Number of grievances which have been (i) opened, (ii) opened for more than 30 days, (iii) those which have been resolved, (iv) closed, and (v) number of responses that satisfied the complainants, during the reporting period disaggregated by category of grievance.

7.2. Reporting Back to Stakeholder Groups

During the Sub-project's development and construction phases, the construction contractors will prepare brief monthly reports on environmental and social performance for Afyonkarahisar Municipality Management which will include an update on implementation of the stakeholder engagement plan and include indicators in this section. The monthly reports will be shared with ILBANK which will report quarterly to World Bank.

Afyonkarahisar Municipality's Social Affairs Manager will report back to stakeholder groups, primarily through public meetings in sub-project affected municipalities and/or Neighborhoods. Minutes of meetings will be shared with the participants during subsequent public meetings.

The summary will be published after removing identifying information on individuals to protect their identities in accordance with the Law on the Protection of Personal Data. Feedback received through the GM will be responded to in writing and verbally. Key sub-project updates will be posted on Afyonkarahisar Municipality's website.

ANNEXES

Annex 1. Sample Grievance and Grievance Close Out Form

Grievance Form

Turkish Version will be used at the SPP Site

Reference No		
Name Surname <i>The complainant shall hold the right to remain anonymous. Although giving name and address is not compulsory, it should be kept in mind that during the feedback process regarding the grievance some problems may occur due to lack of information</i>		
Please mark how you wish to be contacted	Please provide details for your preferred communication	
E-mail		
Telephone		
Mail		
Other		
Province/Town/Settlement		
Date		
Category of the Grievance		
1. On assets/properties impacted by the Sub-project		
2. On infrastructure damages (roads, sewage system or water resources etc.)		
3. On decrease or complete loss of sources of income		
4. On environmental issues		
5. On employment process		
6. On traffic, transportation and other risks		
7. On Inappropriate behavior		
8. Other (Please specify):		
Description of the Grievance What did happen? When did it happen? Where did it happen? What is the result of the problem?		
What would you like to see happen to resolve the problem?		

Signature:

Date:

Grievance Close Out Form

Grievance closeout number:			
Define immediate action required:			
Define long term action required (if necessary):			
Compensation Required?	<input type="checkbox"/> YES	<input type="checkbox"/> NO	
CONTROL OF THE REMEDIATE ACTION AND THE DECISION			
Stages of the Remediate Action		Deadline	and Responsible Institutions
1.			
2.			
3.			
4.			
5.			
6.			
7.			
8.			

COMPENSATION AND FINAL STAGES

This part will be filled and signed by the complainant after s/he receives the compensation fees and his/her complaint has been remediated.

Notes:

Name-Surname and Signature of the Complainant

Title-Name-Surname and Signature of the
Representative of the Responsible
Institution/Company

Date...../...../.....

Grievance Database

Date of Grievance	Name of Grievance Holder	Subject of Grievance	Corrective Action	State of Grievance

CONSULTATION FORM

MEETING DETAILS						
Interviewed Entity				Mode of Communication <input type="checkbox"/> Telephone <input type="checkbox"/> Face-to-face <input type="checkbox"/> Web site <input type="checkbox"/> Other		
Name-Last Name of the Interviewee						
Telephone						
Address						
Email						
Type of Stakeholder						
Government organization	Private Enterprise	Professional/ University	Chamber	NGO	Industry	Media
Meeting Context						
Sub-project-related questions:						
Sub-project-related concerns/feedback:						
Responses to the views provided above						

Annex 2. Minutes of Public Consultation Meeting

Minutes of Public Consultation Meeting



This project is co-funded by the European Union, the Republic of Turkey and the World Bank
Bu proje Avrupa Birliği, Türkiye Cumhuriyeti ve Dünya Bankası tarafından ortaklaşa finanse edilmektedir

TÜRKİYE PUBLIC AND MUNICIPAL RENEWABLE ENERGY PROJECT (PUMREP)

AFYONKARAHİSAR MUNICIPALITY SOLAR POWER PLANT PROJECT MINUTES of PUBLIC CONSULTATION MEETING

Revision : REV.00

Meeting Date : 24 04 2025 – 02.00 PM

Meeting Place: Afyonkarahisar Municipality Council Hall



This project is co-funded by the European Union, the Republic of Turkey and the World Bank
Bu proje Avrupa Birliği, Türkiye Cumhuriyeti ve Dünya Bankası tarafından ortaklaşa finanse edilmektedir



This project is co-funded by the European Union, the Republic of Turkey and the World Bank
Bu Proje Avrupa Birliği, Türkiye Cumhuriyeti ve Dünya Bankası tarafından ortaklaşa finanse edilmektedir

1. PUBLIC CONSULTATION MEETING

The **Afyonkarahisar Municipality Solar Power Plant (SPP) Project** will be implemented under the Public and Municipal Renewable Energy Project (KABYEP-PUMREP) financing, with the aim of supporting sustainable development in cities across Türkiye. Financed by the World Bank and implemented through İlbank Inc. (İLBANK), KABYEP represents a significant step toward developing sustainable energy solutions in the public sector and enhancing energy security.

The Environmental and Social Management Plans (ESMPs) prepared for the projects have been developed in compliance with Turkish environmental and social legislation, the World Bank's Safeguard Policies (including Operational Policies – OPs), the World Bank General EHS Guidelines and Sector-Specific Guidelines, as well as İLBANK's ESMP requirements. In addition to these studies, following the completion of the ESMP, a Public Consultation Meeting was held on April 28, 2025, at 2:00 PM. The announcements for the meeting were published on the official website, in national and local newspapers; furthermore, brochures were posted at neighborhood headmen's offices and on public bulletin boards to ensure community awareness.

1.1. Summary

As part of the Public Consultation Meeting, informative presentations about the project were delivered by Afyonkarahisar Municipality officials and representatives from the consulting firm. The opening speech of the meeting was made by the Director of the Water and Sewerage Department of Afyonkarahisar Municipality, who shared general information about the project with the public. Following this, the Ardea Project Consultancy Team took the floor, emphasizing that the project is being carried out under the PUMREP (KABYEP) Program with the financial support of the World Bank and highlighting the importance of the project for the region.

It was noted that the project represents a major step for Afyonkarahisar in promoting the use of renewable energy sources and combating climate change. It was explained that a significant portion of Afyonkarahisar energy costs would be met through clean energy sources thanks to the Solar Power Plant (SPP) to be constructed. It was also stated that the project site is located in Demirçevre (İnaz) Neighborhood, and that the construction is planned to be completed within approximately six (6) months. The project was highlighted not only for its environmental contributions but also for its significant social benefits to Afyonkarahisar. During the presentation delivered by the Ardea Project Consultancy Team, a general introduction to the project was provided, along with detailed information about the Environmental and Social Management Plan (ESMP). The location and technical features of the project site were shared, and environmental and social risks were assessed under the scope of the ESMP. The characteristics of the land, climatic conditions, existing vegetation, natural and cultural assets, and analyses regarding potential natural disasters such as floods and earthquakes were presented to the public. The potential environmental and social impacts that could arise from the implementation of the project,

3



This project is co-funded by the European Union, the Republic of Turkey and the World Bank
Bu Proje Avrupa Birliği, Türkiye Cumhuriyeti ve Dünya Bankası tarafından ortaklaşa finanse edilmektedir

along with the measures to prevent or mitigate these impacts, were explained in detail. It was emphasized that the use of renewable energy would make a significant contribution to the fight against climate change and would create future-oriented opportunities for the local community. Moreover, it was stated that the project to be implemented in İnaz (Demirçevre) Neighborhood would have positive social impacts and would serve as a model project for the entire Afyonkarahisar region.

It was also noted that complaints during the construction and operation phases of the project would be managed effectively and that a transparent grievance mechanism would be implemented.

1.2. Question & Answer Session

In this subsection, the views, requests, and questions raised by participants during the Public Consultation Meeting, along with the corresponding responses provided, are presented. The details are as follows:

- Question from the Mukhtar of İnaz Neighborhood:**
There are times when grazing activities are carried out in this area. Will those who graze animals be adversely affected by the project?

Response from the Social Expert of the Ardea Project Team:
Due to the presence of alternative grazing areas around the project site and the relatively small size of the project area compared to its surroundings, significant loss in grazing activities is not expected. Therefore, no serious adverse impact on grazing activities is anticipated as a result of the project.
- Question from the Mukhtar of Sadıkbey Neighborhood:**
Will the energy transmission line cause any damage to agricultural lands?

Response from the Social Expert of the Ardea Project Team:
Within the scope of the project, approximately 300 meters of the energy transmission line will be installed underground on Treasury-owned land. The works will be carried out solely within these Treasury areas, and no intervention will occur on privately-owned agricultural lands. Additionally, during construction, the route boundaries will be clearly marked to ensure that machinery operates only within permitted zones. After excavation activities are completed, soil rehabilitation will be carried out, and the land will be restored to its natural condition.
- Question from a Citizen:**
Will there be a lot of dust and noise during construction?

Response from the Social Expert of the Ardea Project Team:
Short-term dust and noise generation is anticipated during the construction period. However, all necessary measures will be taken to

4





This project is co-funded by the European Union, the Republic of Turkey and the World Bank
Bu Proje Avrupa Birliği, Türkiye Cumhuriyeti ve Dünya Bankası tarafından ortaklaşa finanse edilmektedir

minimize these impacts. Working hours will be restricted to specific time intervals, watering will be carried out to control dust, and appropriate equipment will be used to manage noise levels. In this way, potential impacts on nearby residents will be kept to a minimum.

1.3. Conclusion

Public Consultation Meeting organized under the project carried out in cooperation with Afyonkarahisar Municipality was held with the participation of Afyonkarahisar Municipality staff, representatives of the consulting firm, and local community members. A total of 13 people attended the meeting, which lasted approximately 40 minutes. During the meeting, the project's purpose, technical details, environmental and social impacts, and the benefits it would provide to the public were explained in detail, with particular emphasis on the mitigation measures to be implemented during the construction and operation phases.

Questions from participants were answered by the project team, and the suggestions and opinions of the public were carefully listened to and documented. At the end of the meeting, information was provided about the next stages of the project, and communication channels through which the public could stay engaged throughout the process were shared.

5



This project is co-funded by the European Union, the Republic of Turkey and the World Bank
Bu Proje Avrupa Birliği, Türkiye Cumhuriyeti ve Dünya Bankası tarafından ortaklaşa finanse edilmektedir

2. PARTICIPANT LIST

Figure 1: Participants Signature List

Katılımcılar:	İsim-Soyisim	Meslek	Temsil Ettiği Kurum /Yerleşim Yeri	Telefon	İmza
1	Sadıkbey mah. muhtarı				
2	Demirce mah. muhtarı				
3	Afyonkarahisar Belediyesi				
4	Afyonkarahisar Belediyesi				
5	İsmet Mah.				
6	Sadıkbey Mah.				
7	İsmet Mah.				
8	Sadıkbey Mah.				
9	Demirce mah.				
10	Sadıkbey Mah.				
11	İsmet Mah.				
12	Sadıkbey Mah.				
13	Sadıkbey Mah.				
14					
15					
16					
17					
18					
19					

6





This project is co-funded by the European Union, the Republic of Turkey and the World Bank
Bu Proje Avrupa Birliği, Türkiye Cumhuriyeti ve Dünya Bankası tarafından ortaklaşa finanse edilmektedir

3. ANNEXES

Annex 1: Photos of Public Consultation Meetings

Figure 2: Photos of Meetings-1



7



This project is co-funded by the European Union, the Republic of Turkey and the World Bank
Bu Proje Avrupa Birliği, Türkiye Cumhuriyeti ve Dünya Bankası tarafından ortaklaşa finanse edilmektedir



8





This project is co-funded by the European Union, the Republic of Turkey and the World Bank
Bu Proje Avrupa Birliği, Türkiye Cumhuriyeti ve Dünya Bankası tarafından ortaklaşa finanse edilmektedir



9



This project is co-funded by the European Union, the Republic of Turkey and the World Bank
Bu Proje Avrupa Birliği, Türkiye Cumhuriyeti ve Dünya Bankası tarafından ortaklaşa finanse edilmektedir

Annex 2: Newspaper Advertisements

Figure 3: AfyonŞehir Newspaper Advertisement for Public Consultation Meeting of AfyonŞehir Municipality SPP Project



10





This project is co-funded by the European Union, the Republic of Turkey and the World Bank
Bu Proje Avrupa Birliği, Türkiye Cumhuriyeti ve Dünya Bankası tarafından ortaklaşa finanse edilmektedir

Figure 4: Yenişafak Newspaper for Advertisement for Public Consultation Meeting of Afyonkarahisar Municipality SPP Project



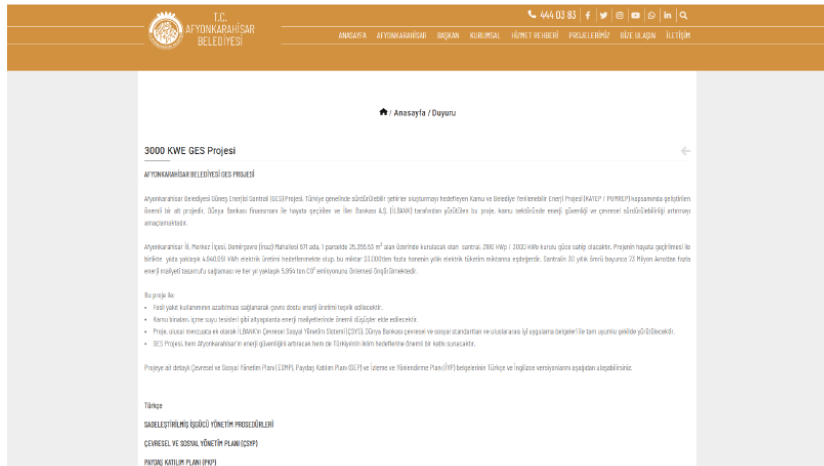
11



This project is co-funded by the European Union, the Republic of Turkey and the World Bank
Bu Proje Avrupa Birliği, Türkiye Cumhuriyeti ve Dünya Bankası tarafından ortaklaşa finanse edilmektedir

Annex 3: Environmental and Social Management Plan (ESMP) Documents and Public Consultation Meeting Announcements Published on the Official Website of Afyonkarahisar Municipality

Figure 5: Afyonkarahisar Municipality Official Website Published Public Consultation Meeting Announcements and ESMP Documents



12





This project is co-funded by the European Union, the Republic of Turkey and the World Bank
Bu Proje Avrupa Birliği, Türkiye Cumhuriyeti ve Dünya Bankası tarafından ortaklaşa finanse edilmektedir

Proje alt detaylı Çevresel ve Sosyal Yönetim Planı (CSMP), Paydaş Katılım Planı (PKP) ve İşleme ve Yönetim Planı (İYP) belgilerinin Türkçe ve İngilizce versiyonlarını aşağıdan ulaşabilirsiniz.

Türkçe
SADİLEŞTİRİLMİŞ İŞGÜCÜ YÖNETİM PROSEDÜRLERİ
ÇEVRESEL VE SOSYAL YÖNETİM PLANI (CSMP)
PAYDAŞ KATILIM PLANI (PKP)
English
SIMPLIFIED LABOR MANAGEMENT PROCEDURES
ENVIRONMENTAL AND SOCIAL MANAGEMENT PLAN (ESMP)
STAKEHOLDER ENGAGEMENT PLAN (SEP)

328 Kez Gözdenldi | Arşiv | Geri | Yazdır

DOKÜMANLAR



13



This project is co-funded by the European Union, the Republic of Turkey and the World Bank
Bu Proje Avrupa Birliği, Türkiye Cumhuriyeti ve Dünya Bankası tarafından ortaklaşa finanse edilmektedir

Annex 4: Afyonkarahisar Municipality SPP Project Public Consultation Meeting Brochure

Ayrıca CSYP potansiyel proje etkilerinin yönetimi için geliştirilen enlem ve kontrolün tanımlanması, bu arazi azaltma önlemlerinin uygulanma takvimini belirlemek, CSYP'nin ve PKP'nin uygulanmasında rol ve sorumlulardan ile Dünya Bankası gerekliliklerine uygun olarak raporlama ve işleme gerekliliklerini tanımlanmaktadır.

İşleme gereklilikleri de CSYP kapsamındaki işleme tabiiyatında tanımlanarak sunulmaktadır. Buna göre projenin inşaat aşamasında, toz emisyonları, hava kirliliği, inşaat sırasında ve geçici trafik yükünden oluşacak gürültü, ahi anormi, iş sağlığı ve güvenliği; işleme aşamasında ise kimyasalların depolanması ve kullanımı, kontrolün yansma ve parlama etkisi, çöçüm kaynakları, şikâyetler, topluluk çatışmaları, paydaş katılımı, iş sağlığı ve güvenliği ve işgücü parametreleri (SVSP'de ve PKP'de belirlenen şartlara uygun itilenecektir.

Bu Çevresel ve Sosyal Yönetim Planı (CSYP)'nin uygulanmasından sorumlu ana kurum, alt-projeğin inşaatından ve işleme aşamasından da sorumlu olan Afyonkarahisar Belediyesi'dir. Proje için farid aşamalarında geçiş taraflar (Yükleniciler, Müşavir firması, Proje Uygulama Birimi, İLBANK vb.) CSYP kapsamında geçiş kurullarda sorumluluk alacaklardır. Sezon edilen tüm çalışmalar Afyonkarahisar Belediyesi tarafından kontrol edilecektir. Alt-proje dokümanları Afyonkarahisar Belediyesi'nin İnternet sitesinde yayınlanacak ve talep edilmesi halinde bu dokümanlar Afyonkarahisar Belediyesi tarafından paylaşılacaktır.

Afyonkarahisar Belediyesi, alt-proje için etkilenilecek topluluklar için endişelerini ve şikâyetlerini dinlemek, çözmek ve takip etmek amacıyla Afyonkarahisar Belediyesi'nin Proje Uygulama Birimi altında proje avelinde bir Şikâyet Mekanizması kuracaktır.

Tüm şikâyetler, PKP'de belirtildiği gibi önceden belirlenmiş bir zaman (özelde) içinde ve işlemlerine göre etkin bir şekilde alınacak, kaydedilecek ve yanıtlanacaktır.

Şikâyet Mekanizmasının kurulumu ve takibi Afyonkarahisar Belediyesi tarafından sağlanacaktır. Bu kapsamda alt-proje ile ilgili bildirim, giriş, öneri ve şikâyetlerin paylaşılması için aşağıda verilen iletişim kanallarına da ayrıca kullanılabileceklerdir:

Afyonkarahisar Belediyesi:
Çağrı Merkezi: 444 4 03 83
E-mail: info@afyon.bel.tr
Web Sayfası: <https://www.afyon.bel.tr>

Tüm paydaşlar, alt-proje ile ilgili şikâyetlerini ve geri bildirimlerini doğrudan devlet yetkililerine iletmek için projenin tüm paydaşlarının erişimine açık ve ülke çapında kullanılan Cumhurbaşkanlığı İletişim Merkezi (KOMİK) gibi alternatif şikâyet mekanizmalarında da yararlanma haklarına sahip olacaklardır.

- Web sitesi: www.afyon.gov.tr
- Çağrı merkezi: 150
- Telefon numarası: 0312 590 20 00

TÜRKİYE KAMU ve BELEDİYE YENİLENEBİLİR ENERJİ PROJESİ

Afyonkarahisar Belediyesi Güneş Enerjisi Santrali Projesi

Halkın Katılımı Toplantısı Bilgilendirme Broşürü

Tarihi: 28.04.2025

Saat: 14.00


Yer: Afyonkarahisar Belediyesi Meclis Salonu

14





This project is co-funded by the European Union, the Republic of Turkey and the World Bank
Bu Proje Avrupa Birliği, Türkiye Cumhuriyeti ve Dünya Bankası tarafından ortaklaşa finanse edilmektedir.

<p>Afyonkarahisar Belediyesi GES (Güneş Enerjisi Santrali) Projesi,</p> <p>Türkiye'deki şehirlerde sürdürülebilir kalkınmayı desteklemek için KAYEP (PUMREP) finansmanı kapsamındaki alt projelerden biridir. İller Bankası A.Ş. (İLBANK)'ın aracılığı ile Dünya Bankası (DB) tarafından finanse edilen Kamu ve Belediye Yenilenebilir Enerji Projesi (KAYEP), kamu sektörü için sürdürülebilir enerji çözümlerine ve artan enerji güvenliğine yönelik önemli bir adımı temsil etmektedir.</p> <p>Afyonkarahisar GES Alt-Projesi ile, kamu sektörü binaları ve belediyelerde yenilenebilir enerji kullanımını artırmak, enerji faturalarını azaltmak ve kamu sektörünün sürdürülebilir enerji çözümleri ile iklim etki azaltma konusundaki taahhüdünü göstermede öncülük etmek yer almaktadır. Türkiye'nin iklim hedeflerine katkı sağlarken Afyonkarahisar Belediyesi'nin enerji güvenliğini de artıracaktır.</p> <p>Afyonkarahisar Belediyesi GES Projesi kapsamında, kurulacak santral 30 yıllık kullanım süresi ile inşa edilecektir. Afyonkarahisar Belediyesi Güneş Enerjisi Santralının kurulu gücü 3180 kWp / 3000 kW'e'dir. Bu proje ile yıllık yaklaşık 4.940.051 kWh elektrik üretmeyi planlanmakta olup, bu miktar 23.368'den fazla haneye elektrik sağlamaya yetecek düzeydedir. Projenin 30 yıllık işletme ömrü boyunca belediyenin enerji maliyetlerinden 73,03 milyon Avro'dan fazla tasarruf sağlanacağı ve yıllık 5.994 tondan fazla CO₂ emisyonunu önlemesi beklenmektedir. Alt proje, Afyonkarahisar ili, Merkez İlçesi, Demirciye (İnaz) Mahallesi, 671 ada 1 parselde yer alan 25.355,53 m²'lik alan içinde kurulması planlanmaktadır. (bkz: Şekil 1).</p>	<p>Alt-Projenin beklenen sonuçları aşağıdaki gibidir:</p> <p>-Alt-proje, Afyonkarahisar ili, Merkez İlçesi, Demirciye (İnaz) Mahallesi'nde yer alan ve Afyonkarahisar Belediyesine ait parsel üzerine yapılacaktır. Ekstra bir kamulaştırmaya ihtiyaç duymadan ilin enerji ihtiyacı güneş enerji panelinden karşılanabilecektir.</p> <p>- Alt-proje kapsamında, 304 metresi yer altı kablo ve 636,18 metresi havalı hat olmak üzere toplam 1000,18 metre uzunluğunda bir enerji nakil hattı (ENH) inşa edilecektir. Hat, Sadıkbey Mahallesi'ndeki Hazine mülkiyetindeki 350/77 ve 350/78 parsellerinden geçecek olup, geçişe ilişkin resmi işleri bulunmaktadır.</p> <p>- Alt-proje, enerjide fosil yakıtlara olan bağımlılığı azaltacak ve Afyonkarahisar'ın ekonomik olarak kalkınmasını sağlayacaktır.</p> <p>-Alt-proje, Türkiye'nin yenilenebilir enerji kaynakları sektöründe ulusal ve uluslararası kalite standartlarına uyum çabalarına katkı sağlayacaktır.</p> <p>GES Projesinin inşaatının altı (6) ayda tamamlanması planlanmaktadır.</p> <p>Alt-projenin işe alın sürecinde yerel halka öncelik verilecektir.</p> <p>Alt-Proje, ulusal mevzuatı yanı sıra İLBANK'ın Çevresel Sosyal Yönetim Sistemi (ÇSYS), Dünya Bankası Çevresel ve Sosyal Standartları, yönergeler, standartlar ve en iyi uygulama belgeleri de dahil olmak üzere, uluslararası uygulamalarla uyumlu olacaktır.</p> <p>Alt-proje idari binalar, su temini ve arıtma tesisleri ile kamu aydınlatması dâhil olmak üzere kamu tesislerinde enerji maliyetlerinde tasarruf sağlayacaktır.</p>	<p>Bu operasyonel maliyetlerin azalması, belediyenin kaynakları daha verimli bir şekilde diğer önemli hizmetlere ve altyapı geliştirme projelerine ayırmasına olanak tanıyarak, bölge sakinlerinin genel yaşam kalitesini artıracaktır. Ayrıca, alt-proje, inşaat ve işletme aşamasında yerel halk için iş fırsatları yaratacaktır.</p>   <p>Şekil 1. Afyonkarahisar Belediyesi GES Alt-Proje Alanı</p> <p>Beklenen etkilerin yönetimi için Çevresel ve Sosyal Yönetim Planı (ÇSYP) ve Paydaş Katılım Planı (PKP) geliştirilmiştir.</p> <p>ÇSYP, alt-projenin süresi boyunca olası çevresel ve sosyal etki ve risklerin izlenmesi, değerlendirilmesi ve önemi olumsuz çevresel etkiler için etki azaltma önlemleri önermek amacıyla hazırlanmaktadır.</p>
---	---	---

15



This project is co-funded by the European Union, the Republic of Turkey and the World Bank
Bu Proje Avrupa Birliği, Türkiye Cumhuriyeti ve Dünya Bankası tarafından ortaklaşa finanse edilmektedir.

Annex 5: Public Consultation Meeting Presentation Document

TÜRKİYE KAMU ve BELEDİYE YENİLENEBİLİR ENERJİ PROJESİ (KAYEP) (PUMREP)

Afyonkarahisar Belediyesi Güneş Enerjisi Santrali Projesi

Halkın Katılımı Toplantısı

28.04.2025

14.00

Afyonkarahisar Belediyesi Meclis Salonu (5.Kat)



16





This project is co-funded by the European Union, the Republic of Turkey and the World Bank
Bu Proje Avrupa Birliği, Türkiye Cumhuriyeti ve Dünya Bankası tarafından ortaklaşa finanse edilmektedir

- PUMREP (KABYEP) kapsamında finanse edilecek Afyonkarahisar 3180 kWp/ 3000 kWe kapasiteli alt proje Afyonkarahisar Belediyesi tarafından yenilenebilir enerji tesislerinin kurulumunu içermektedir.
- Proje, Afyonkarahisar İlinin Merkez İlçesi İnaz Mahallesi'nde 671 ada 1 parsel üzerinde yer almaktadır.
- Proje kapsamında, İLBANK'ın ÇSYS'si ve Dünya Bankası ÇSÇ'si ile uyumlu olarak, geçerli Çevresel ve Sosyal Standartlar (ÇSS'ler), Dünya Bankası Grubu (DBG) Genel Çevre Sağlık ve Güvenlik (ÇSG) Rehberleri ve Sektör Rehberleri ile Türkiye'de yürürlükte olan ulusal mevzuata uygun bir Çevresel ve Sosyal Yönetim Planı (ÇSYP) ve Paydaş Katılım Planı (PKP) hazırlanmıştır.
- 29.07.2022 tarihli ve 31907 sayılı Resmi Gazete ile yürürlüğe giren ulusal ÇED Yönetmeliği uyarınca, Afyonkarahisar Belediyesi GES alt-Projesi ÇED Yönetmeliği'nin Ek-II'ine tabidir ve Nisan 2021'de ÇED Etki Değerlendirmesi Gerekli Değildir kararı verilmiştir.
- Proje kapsamında hazırlanan Paydaş Katılım Planı, "paydaşları" oluşturan projeden etkilenen taraflara, diğer ilgili taraflara ve hassas gruplara, Alt Proje ve etkileri hakkında görüş ve endişelerini ifade etme fırsatına sahip olmaları için ilgili, zamanında ve erişilebilir bilgi sağlanmasını temin etmek amacıyla oluşturulmuştur.
- Paydaş katılımı, geniş bir paydaş çevresine sahip olan alt projelerin başarıyla tamamlanmasında önemli bir rol oynamaktadır; bu çevre, yerel halktan hassas gruplara, kamu kurumlarından sivil toplum kuruluşlarına kadar geniş bir yelpazeyi kapsamaktadır.



17



This project is co-funded by the European Union, the Republic of Turkey and the World Bank
Bu Proje Avrupa Birliği, Türkiye Cumhuriyeti ve Dünya Bankası tarafından ortaklaşa finanse edilmektedir

Afyonkarahisar Alt-Projesi Konumu



18





This project is co-funded by the European Union, the Republic of Turkey and the World Bank.
Bu Proje Avrupa Birliği, Türkiye Cumhuriyeti ve Dünya Bankası tarafından ortaklaşa finanse edilmektedir.

Enerji Nakil Hattı



Yüklenici tarafından gerçekleştirilecek olan ENH güzergahının toplam uzunluğu, malzeme tedariki ve montaj dâhil olmak üzere 1000.18 metredir. Bu uzunluğun 364 metresi yer altı kablolarından, 636.18 metresi ise havai hatlardan oluşacaktır. Direklerin yerleştirileceği noktalar 350/77 ve 350/78 numaralı parsellerden geçmektedir. Parsel sorgulamasına göre her iki parsel de Hazine'ye kayıtlıdır ve herhangi bir kamulaştırma işlemi gerekmemektedir.

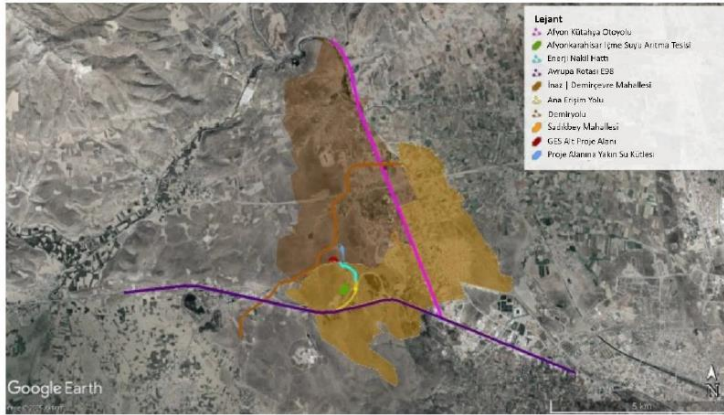


19



This project is co-funded by the European Union, the Republic of Turkey and the World Bank.
Bu Proje Avrupa Birliği, Türkiye Cumhuriyeti ve Dünya Bankası tarafından ortaklaşa finanse edilmektedir.

Proje Etki Alanı



20





This project is co-funded by the European Union, the Republic of Turkey and the World Bank
Bu Proje Avrupa Birliği, Türkiye Cumhuriyeti ve Dünya Bankası tarafından ortaklaşa finanse edilmektedir

- Alt Proje Etki Alanı, alt projenin çevresel ve sosyal etkilerinin meydana gelmesinin beklendiği coğrafi bölgeyi ifade etmektedir. Bu alan, inşaat, işletme ve bakım faaliyetlerinden etkilenen yerleri içermekte olup, yerel ekosistemler, yakın yerleşim yerleri ve altyapılar gibi unsurları kapsamaktadır.
- Alt projenin sosyal mevcut durumu, yerel demografi, sağlık ve eğitim hizmetleri, arazi kullanımı/edinimi, kültürel miras, yerel halkın geçim kaynakları, mevcut altyapı ve alt proje etki alanında yer alan hassas grupları kapsamlı bir şekilde ortaya koymaktadır. Bu bağlamda, ilgili sosyal etki alanı İnaz (Demirçevre) Mahallesi ve Sadıkbey Mahallesi ile sınırlıdır.
- Alt proje alanından etkilenen yerleşim yeri olarak İnaz Mahallesi seçilmiştir; çünkü alt proje bu mahallede inşa edilecek olup, mahalleye yakın yerleşimler bulunmaktadır. Ayrıca, Enerji Nakil Hattı (ENH), Sadıkbey Mahallesi'ne bağlı parsellerden geçmektedir. ENH'nin Sadıkbey Mahallesi'ne bağlı parseller üzerinden geçmesi nedeniyle, bu mahallenin de projeden etkilenebileceği değerlendirilmektedir.
- Proje kapsamında oluşabilecek olası olumsuz etkileri en aza indirmek ve toplum üzerinde kalıcı olumsuz etkiler oluşturmamak adına, İnaz ve Sadıkbey Mahallelerinde düzenli bilgilendirme toplantıları yapılması ve şikâyet mekanizmalarının hayata geçirilmesi önerilmektedir. Ayrıca, inşaat aşamasında çevresel etkileri azaltmaya yönelik alınacak önlemlerin düzenli olarak izlenmesi önem arz etmektedir.



21



This project is co-funded by the European Union, the Republic of Turkey and the World Bank
Bu Proje Avrupa Birliği, Türkiye Cumhuriyeti ve Dünya Bankası tarafından ortaklaşa finanse edilmektedir

Çevresel ve Sosyal Mevcut Durum

- Çevresel ve sosyal mevcut durum koşullarını belirlemek amacıyla çeşitli veri toplama yöntemleri kullanılmıştır. Afyonkarahisar Belediyesi yetkilileri ve Alt Proje Etki Alanı mahalle muhtarları ile yapılan görüşmeler, kurumlardan alınan raporlar, izin belgeleri, ve saha çalışmaları yerel durum hakkında sosyal ve çevresel mevcut duruma dair önemli bilgiler sunmuştur.
- Hâlihazırda arazi üzerinde herhangi bir faaliyet veya gelişim söz konusu değildir. Bu alan kullanılmamakta olup, konut, tarım veya ticari amaçlarla değerlendirildiğine dair herhangi bir bulguya rastlanmamıştır. Ayrıca, söz konusu arazi ile ilgili herhangi bir gayri resmi yerleşim veya özel mülkiyet anlaşmazlığı bulunmamaktadır.
- Alt proje alanı çevresindeki yerel arazi sahipleri, Sadıkbey Mahallesi muhtarı aracılığıyla bilgilendirilmiş olup, gñeş enerji santrali projesi ve olası etkileri hakkında bilgilendirilmişlerdir. Yapılan görüşmelerde, proje kapsamında herhangi bir olumsuz etki beklemediklerini ifade etmişlerdir. Ayrıca, şikâyet mekanizması hakkında bilgilendirilmişler ve olası sorunlarını veya görüşlerini ilgili makamlara iletebilecekleri konusunda bilgilendirilmişlerdir.

Tablo 7: Mevcut Durum Saha Çalışmalarının Özeti

Konu	Saha Çalışması Tarihi	Saha Çalışmasına Katılan Uzmanlar
Sosyal ve Çevresel Mevcut Durum	22.10.2024	İnaz Mahallesi Muhtarı
	20.01.2025	Sadıkbey Mahallesi Muhtarı
	22.10.2024	Afyonkarahisar Belediyesi Su ve Kanalizasyon Müdürü



22

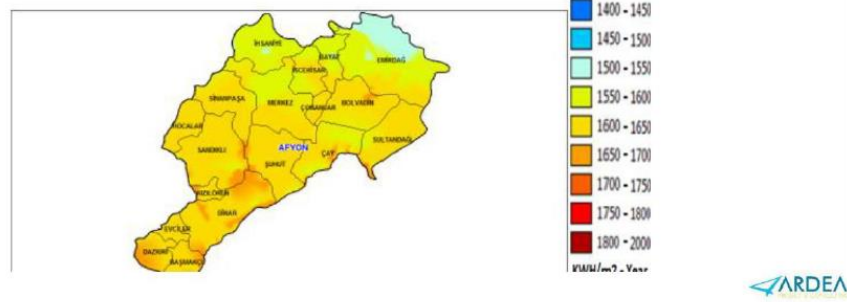




This project is co-funded by the European Union, the Republic of Turkey and the World Bank
Bu Proje Avrupa Birliği, Türkiye Cumhuriyeti ve Dünya Bankası tarafından ortaklaşa finanse edilmektedir

- Çevresel ve sosyal mevcut durum koşullarını belirlemek amacıyla alt-proje alanlarının fiziksel çevresi, biyoçeşitliliği, ve sosyal çevresi analiz edilmiştir. Bu kapsamda proje alanları, topografya, jeoloji, depremsellik, toprak ve arazi yapısı, hava kalitesi, su kaynakları, gürtürlü ve doğal afetler, flora fauna, demografik yapı, altyapı hizmetleri, ekonomik koşullar, kültürel miras ve proje alanlarında yaşayan dezavantajlı gruplar bakımından incelenmiştir.
- Merkez ilçesi, yıl boyunca bol güneş ışığı almasını sağlayan elverişli coğrafi konumu ve iklim koşulları sayesinde yüksek güneş radyasyonu seviyelerinden faydalanmaktadır. Bu durum, büyük ölçekli güneş enerji santrallerinin kurulumu için ilçeyi ideal bir aday haline getirmektedir.

Şekil 7: Afyonkarahisar İli Güneş Enerjisi Potansiyel Haritası

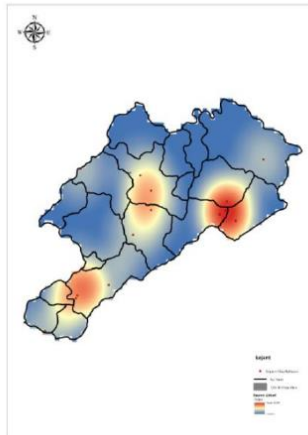


23



This project is co-funded by the European Union, the Republic of Turkey and the World Bank
Bu Proje Avrupa Birliği, Türkiye Cumhuriyeti ve Dünya Bankası tarafından ortaklaşa finanse edilmektedir

Şekil 6: Afyonkarahisar Deprem Şiddet Haritası



Afyonkarahisar'daki depremler genellikle düşük büyüklükte olup, yerel nüfus ve yapılar üzerinde sınırlı etkilere sahiptir. Bölge sık sık büyük veya yıkıcı depremler yaşamamakla birlikte, tektonik yapısı nedeniyle risk hâlâ mevcuttur ve sürekli dikkat gerektirmektedir. Alt proje sahası, 5 km yarıçapındaki alanda önemli bir sismik olay yaşamamış olup, bölgenin düşük deprem tehlikesine sahip olduğunu göstermektedir.

Merkez ilçesindeki hava kalitesi, proje alanına yakın konumu nedeniyle özellikle önem arz etmektedir. Alt proje sahasının yüksek rakımı, doğal olarak kirliliğe karşı bir miktar koruma sağlayabilir, ancak inşaat sürecinde toz ve emisyonları en aza indirmek için etkili çevresel yönetim uygulamalarının uygulanması esastır. GES projesinin temiz enerji kaynağı olması sebebiyle de hava kalitesi üzerinde olumsuz etkisi olmayacaktır.

Alt proje alanı, kurak ve yüksek bir arazide konumlanmış olup, bu zengin endemik bitki örtüsünün bulunduğu ekosistemden uzakta yer almaktadır. Bu durum, söz konusu bitki türleri açısından herhangi bir sorun teşkil etmediğini ve çevresel bütünlüğün korunarak projenin uygulanabilir olduğunu göstermektedir.



24





This project is co-funded by the European Union, the Republic of Turkey and the World Bank
Bu Proje Avrupa Birliği, Türkiye Cumhuriyeti ve Dünya Bankası tarafından ortaklaşa finanse edilmektedir

- Afyonkarahisar'da en yüksek ortalama yağış miktarı Mayıs ayında olup, 56,1 mm olarak kaydedilmiştir. Yapılan analizde, drenaj mesafesi 500 metre olarak alınmış ve yağış durumunda derelerin yönü ile bunlara bağlanacak kanalın yönü Şekil 8'de gösterilmiştir. Analiz sonucunda, alt proje alanının kuru bir dere yatağını yanında yer aldığı belirlenmiş olsa da, alanın eğimi ve Afyonkarahisar'ın düşük aylık yağış miktarı nedeniyle sel riski düşük seviyededir.
- Alt proje alanına yakın alçak bir bölgede, Şekil 9'da görüldüğü üzere, geçmişte yapay plaj olarak tasarlanmış bir su kütlesi bulunmaktadır. Bu su kütlesi, yükseklik açısından alt proje alanının altında yer almaktadır. Belediye ile yapılan görüşmelerde, bu yapay barajın belediyenin kontrolü altında olduğu ve su taşkını riskinin bulunmadığı teyit edilmiştir.

Şekil 9: Alt Proje Alanına Yakın Su Kütlesi



25



This project is co-funded by the European Union, the Republic of Turkey and the World Bank
Bu Proje Avrupa Birliği, Türkiye Cumhuriyeti ve Dünya Bankası tarafından ortaklaşa finanse edilmektedir

- Proje sahasına yakın herhangi bir kültürel miras olmaması projenin sorunsuz bir şekilde ilerlemesini sağlamaktadır.
- Mahalle muhtarlarından elde edilen bilgilere göre, İnaz ve Sadıkbey mahallelerindeki ana geçim kaynakları tarım, hayvancılık ve turizmdir. İnaz Mahallesi muhtarı, proje alanın mera olarak kullanılmadığını ve otlatma için daha büyük alanların mevcut olduğunu belirtmiştir. Sadıkbey Mahallesi muhtarı, alt proje alanının otlatma için kullanılmadığını ifade etmiştir.
- Hassas grupların projeye dahil edilme nedeni, inşaat gibi büyük ölçekli faaliyetlerin bu gruplar üzerindeki olumsuz etkilerinin önceden belirlenmesi ve bu etkileri en aza indirmek amacıyla gerekli önlemlerin alınmasını sağlamaktır. Muhtarlarla yapılan görüşmelere göre, mahallelerde dezavantajlı gruplar bulunmaktadır; ancak sayıları tabloda belirtildiği gibi olup, alt projelerin bu grupları olumsuz etkileyeceği düşünülmektedir.

Tablo 10: Sosyal Etki Alanındaki Hassas Gruplar

Kategori	İnaz Mahallesi	Sadıkbey Mahallesi
Mülteciler	Yok	Yok
Engelli bireyler	10	20
65 yaş üstü bireyler	200	500
Kronik hastalığı olan veya özel bakıma ihtiyacı olan bireyler	Yok	5-6
Kadın hane reisleri	20	5



26





This project is co-funded by the European Union, the Republic of Turkey and the World Bank.
Bu Proje Avrupa Birliği, Türkiye Cumhuriyeti ve Dünya Bankası tarafından ortaklaşa finanse edilmektedir.

Arazi Edinim Durumu

Tablo 14: Alt Proje İçin Arazi Edinim Durumu

Alt Proje Bileşeni	Parsel No	Mevcut Arazi Sahipliği (Örneğin, Başvuru Sahibi, Alt-Kredi Kullanıcısı, Özel Kişi, Tüzel Kişilik, Hazine, Kayıtsız, Diğer)	Parsel Türü (Tapu Kayıtına Göre) (Örneğin, Tarım Arazisi, Mera, Ham Toprak, vb.)	Arazi Edinim Yöntemi (Örneğin, Satın Alma, Kiralama, Tahsis, İrtifak Hakkı, vb.)	Parselin Tapu Alanı (m ²)	Alt Proje Tarafından Kullanılacak Alan (m ²)	Arazi Edinim Durumu
GES Alanı	671/1	Tüzel Kişilik (Afyonkarahisar Belediyesi)	Ham Toprak	Belediye Arazisi	25,355.53	25,355.53	Belediye mülkiyetinde bulunan arazi
ENH	350/77	Hazine Arazisi	Orman	İrtifak Hakkı	524,308.01	14,563 m ²	TEİAŞ tarafından tutulan irtifak hakkına ilişkin şerh, Ek B.4'te görüldüğü üzere mülkiyet kaydına işlenmiştir.
	350/78	Hazine Arazisi	Ham Toprak	İrtifak Hakkı	4704,84		

Alt proje alanı, tarımsal faaliyetlerin yürütülmediği dağlık bir bölgede seçilmiş olup, çevredeki tarımsal üretime veya diğer faaliyetlere zarar vermeyecek şekilde planlanmıştır.

Ayrıca, erişim yolu için herhangi bir kamulaştırma ihtiyacı bulunmamaktadır. Alt proje kapsamında, asfalt kaplaması bulunmayan yol kısmı stabilize edilerek asfaltlanacak ve erişime uygun hale getirilecektir.

ENH güzergâhı, Hazine'ye kayıtlı olan Sadıkbey Mahallesi'ndeki 350/77 ve 350/78 parselleri üzerinden geçmektedir.

Enerji nakil hattı üzerinde TEİAŞ Genel Müdürlüğü'nün daimi intifa hakkı bulunmaktadır.



27



This project is co-funded by the European Union, the Republic of Turkey and the World Bank.
Bu Proje Avrupa Birliği, Türkiye Cumhuriyeti ve Dünya Bankası tarafından ortaklaşa finanse edilmektedir.

Uygulama Takvimi

İnşaat ve işletme aşamaları faaliyetlerinin süreleri aşağıda verilmiştir.

Tablo 22: Faaliyet Süreleri

Aşama	Açıklamalar/Notlar
İnşaat Süresi (şantiye mobilizasyonundan geçici kabul sürecine kadar)	6 ay
Kusur Sorumluluk Dönemi	12 ay / 1 yıl
İşletme Süresi	30 yıl



28





This project is co-funded by the European Union, the Republic of Turkey and the World Bank
Bu Proje Avrupa Birliği, Türkiye Cumhuriyeti ve Dünya Bankası tarafından ortaklaşa finanse edilmektedir

Paydaş Grupları

Paydaş Katılım Planı, projeden etkilenen taraflar, diğer ilgili taraflar ve “paydaşları” oluşturan hassas grupların, Alt Proje ve etkilerine ilişkin görüş ve endişelerini ifade edebilmeleri amacıyla ilgili, zamanında ve erişilebilir bilgiyle donatılmalarını sağlamak üzere hazırlanmıştır.

Tablo 2: Paydaş Grupları

Paydaş Grubu	TARU/TKA Notları	Yüksek Düzey	Yüksek Düzey	
Proje ile Etkilenen Taraflar	<ul style="list-style-type: none"> Makullu Sakatları (İzmir Makullu, Sakatları Makullu, İki Yüzer Yolları - Yerel Aray Sakatları) 	Alt Proje sahaları yakınındaki yerleşimlerle, özellikle, trafik, su, elektrik, sosyal hizmetler gibi konularda doğrudan olumsuz etkilenme potansiyeli taşıyan taraflardır.	Yüksek	Yüksek
	<ul style="list-style-type: none"> Aktörler (Afyonkarahisar İyeme Sığı Anıma Tesis) 	Alt Proje sahaları yakınındaki yerleşimlerle, özellikle, trafik, su, elektrik, sosyal hizmetler gibi konularda doğrudan olumsuz etkilenme potansiyeli taşıyan taraflardır.	Orta	Yüksek
	<ul style="list-style-type: none"> Demiryolu 	İzmir Makullu'dan kaynaklı potansiyel elektrik, su ve tesisler, kurulum aşamasında demiryolu operasyonlarının aksaması riski.	Yüksek	Orta
	<ul style="list-style-type: none"> Su Kaynakları (Yapay Baraj) 	İzmir Makullu'da su, hava kirliliği veya diğer altyapı ile ilgili sorunlar, özellikle, su, elektrik, sosyal hizmetler gibi konularda doğrudan olumsuz etkilenme potansiyeli taşıyan taraflardır.	Yüksek	Orta
Hassas Bireyler veya Gruplar	<ul style="list-style-type: none"> Alt Proje faaliyetleri kapsamında gerçekleştirilen işlemler (özellikle zemin dahi) 	İzmir Makullu'da su, hava kirliliği veya diğer altyapı ile ilgili sorunlar, özellikle, su, elektrik, sosyal hizmetler gibi konularda doğrudan olumsuz etkilenme potansiyeli taşıyan taraflardır.	Yüksek	Yüksek
	<ul style="list-style-type: none"> Eğilimli bireyler 65 yaş üstü bireyler Kadınlar 	Hassas gruplar, Alt Proje'nin olumsuz etkilerinden orantısız şekilde etkilenebilir.	Yüksek	Yüksek

Diğer İlgili Taraflar	<ul style="list-style-type: none"> Sivil Toplum Kuruluşları (STK'lar) 	Alt Proje'nin çevresel ve sosyal etkileri (STK'nın faaliyet alanına bağlı olarak değişiklik gösterebilir)	Yüksek	Düşük
	<ul style="list-style-type: none"> Kamu Kurumları <ul style="list-style-type: none"> Sağlık ve Teknoloji Bakanlığı Enerji ve Tabii Kaynaklar Bakanlığı Afyonkarahisar Kaymakamlığı, Afyonkarahisar Valiliği Afyonkarahisar Çevre, Şehircilik ve İklim Değişikliği İl Müdürlüğü Yerel Yönetimler Basın Kuruluşları Yerel Gazeteler 	Alt Proje'den üretilen enerji ile olumlu bir etki beklenmektedir. Kamu kurumları, izin süreçlerine, arazi edinimi süreçlerine veya topluluklarla işbirliklerine dâhil olabilir.	Yüksek	Orta



29



This project is co-funded by the European Union, the Republic of Turkey and the World Bank
Bu Proje Avrupa Birliği, Türkiye Cumhuriyeti ve Dünya Bankası tarafından ortaklaşa finanse edilmektedir

- Bilgi yaymak amacıyla medya kanalları mümkün olduğunca kullanılacaktır.
- Yazılı bilgiler, broşürler, el ilanları, afişler vb. çeşitli iletişim araçları ve materyaller aracılığıyla halka duyurulacaktır. Afyonkarahisar Belediyesi, alt projeyle ilgili önemli güncellemeler ve alt projenin çevresel ve sosyal performansına ilişkin raporları web sitelerinde düzenli olarak güncelleyecektir. Web siteleri ayrıca alt projeye ilişkin şikayet mekanizması hakkında bilgi sağlayacaktır.
- Gerekli görüldüğünde, alt projenin inşaat, işletme ve kapanma aşamaları boyunca, medya kuruluşları veya yerel yönetiminden seçilen paydaşlar için saha ziyaretleri veya gösterim turları düzenlenecektir.
- Afyonkarahisar Belediye binasındaki Bilgilendirme Masası, yerel sakinlere paydaş katılım faaliyetleri, inşaat güncellemeleri, şikayet yöntemlerinin iletişim bilgileri gibi konularda bilgi sağlayacaktır.
- Alt projenin yaşam döngüsünün erken aşamalarından itibaren, alt proje ve şikayet mekanizması ile ilgili bilgiler bireysel veya grup toplantıları, basılı materyaller, ilan panoları, SMS ve WhatsApp grup mesajları aracılığıyla kamuya açıklanmaya devam edecektir.



30



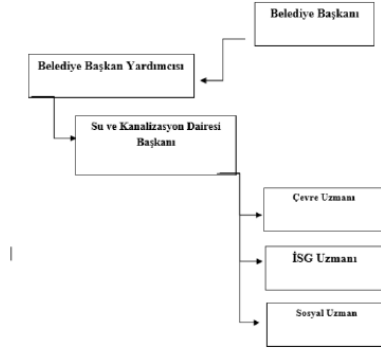


This project is co-funded by the European Union, the Republic of Turkey and the World Bank
Bu Proje Avrupa Birliği, Türkiye Cumhuriyeti ve Dünya Bankası tarafından ortaklaşa finanse edilmektedir

Şikayet Mekanizması

- Uluslararası gereklilikler doğrultusunda, Alt Proje den etkilenen toplulukların ve iş gücünün endişe ve şikayetlerini almak, çözmek ve takip etmek amacıyla Afyonkarahisar Belediyesi tarafından bir şikayet mekanizması oluşturulacaktır. DB standartlarına göre Şikayet Mekanizması (ŞM), alt projenin ömrü boyunca, inşaat öncesi, inşaat ve işletme aşamaları dahil olmak üzere, belediye tarafından uygulanacaktır.
- Afyonkarahisar Belediyesi Proje Uygulama Birimi (PUB), tüm paydaşlarla yakın ilişkiler kurmaktan sorumlu olacaktır.

Şekil 12: Organizasyon Yapısı - Proje Uygulama Birimi (PUB)



31



This project is co-funded by the European Union, the Republic of Turkey and the World Bank
Bu Proje Avrupa Birliği, Türkiye Cumhuriyeti ve Dünya Bankası tarafından ortaklaşa finanse edilmektedir

- Ayrıca, şikayet mekanizması, anonim başvuruların dikkate alınması ve ele alınmasını sağlayacak şekilde tasarlanacaktır.
- Afyonkarahisar Belediyesi'nin iletişim araçlarına ek olarak, şikayetleri iletmek için aşağıdaki iletişim kanalları kullanılabilir: İnşaat alanlarında işçi şikayetleri için seçilen şikayet kutuları ve ilgili mahallelerin muhtarları için şikayet kutuları, İnşaat alanlarındaki site yöneticileri ile doğrudan iletişim, Toplantılar ve resmi/özel istişareler.
- Eğer kamu paydaşları ve etkilenen gruplar, Afyonkarahisar Belediyesi PUB'daki Ç&S Ekibi tarafından sunulan çözümlerden memnun değillerse veya daha yüksek düzeyde bir açıklama talep ediyorlarsa şikayetler/istekler/öneriler İLBANK'a da şikayetlerini iletebileceklerdir.

Tablo 5: Afyonkarahisar Belediyesi İletişim Bilgileri

Web Sayfası	Telefon	Resmi Yazışmalar İçin Adres	E-posta
https://www.afyon.bel.tr	Çağrı Merkezi 444 03 83	Karaman Mahallesi Albay Reşat Çiğiltepe Caddesi No:11 03200 Merkez/Afyonkarahisar	info@afyon.bel.tr

- Belediye, halktan gelen şikayet, öneri ve talepleri daha verimli şekilde dijital ortamda yönetmek için <https://ecozum.afyon.bel.tr/WebBasvuru/sikayetformu#/> internet sitesini aktif şekilde kullanmaktadır. Bu platform aracılığıyla kullanıcılar şikayet ve önerilerini iletebilmekte, belediye ile daha hızlı iletişim kurulabilmektedir.
- Halka açık şikayet kanallarına ek olarak, Alt Proje de dahil olan çalışanlara yönelik özel bir Şikayet Mekanizması (ŞM) kurulmuştur. Bu çalışan ŞM'si, tüm çalışanların, alt yüklenici personeli dâhil, çalışma koşulları, ücretler, ayrımcılık, taciz, sağlık ve güvenlik endişeleri veya diğer istihdamla ilgili hususlar gibi konuları gizli ve bağımsız bir şekilde raporlayabilecekleri bir kanal sağlamaktadır.



32





Şikayet Açma Formu

Şekil 3: Şikayetlerin Alınmasına Yönelik Afyonkarahisar Belediyesi Web Sitesinin Ekran Görüntüsü

The screenshot shows a web browser window with the address bar displaying 'http://www.my-f-k.s/'. The page title is 'My f-k's'. The main content area contains a registration form with the following fields and labels:

- Age:** A text input field.
- Gender:** A dropdown menu.
- Cap Number:** A text input field.
- Username:** A text input field.
- Pass:** A text input field.
- Repeat:** A text input field.
- Send:** A button labeled 'Register My f-k's'.
- Registration:** A checkbox labeled 'I agree'.

At the bottom of the page, there is a navigation bar with the text 'My f-k's' and a link 'Registration page'.

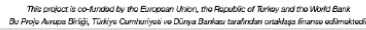
Referans No	
<i>İsim – Soyadı</i> <i>(Şahadet, aile ve/veya hukukî şahadetler için)</i> <i>veya diğer normal şekilde bilinen adı, şifalı ve/veya diğer genel kullanıma tabi diğer atıl adları</i> <i>veya kullanılmayan bir isim kullanımı için</i> <i>(çocukların ebeveynleri için)</i>	
<i>İdari esasla değişim kuramıştır (tedbiri) mi?</i> <i>Hayır mı?</i>	<i>İdari tercihi ettiğinin değişim yönetiminin dışından yapıldığını</i>
<i>E-posta</i> <i>Telefon</i> <i>Posta</i> <i>Diğer</i> İl Şehir/Verilecek Yeri	
Tarih	
Şikayet Katagorisi	
1. <i>Aile Projesi tarafından edinilen varlıkların mülkiyet durumu</i>	
2. <i>Aileye başkaları (yabancılar, kardeşler) veya aileye ait kaynakları (vb.) temininde</i>	
3. <i>Özellik kaynaklarının edinilmesi veya temininde kaybolması üzerine</i>	
4. <i>Çerçevesi sınırlıdır üzerine</i>	
5. <i>İhtilafın önüne geçilme üzerine</i>	
6. <i>Trafik, ulaşım ve diğer masraflar üzerine</i>	
7. <i>Uygunluk ve anlaşmazlık üzerine</i>	
8. <i>Diğer (Aileye belirlenir)</i>	
Şikayeti Açıklamaları Ne oldu? Ne zaman oldu? Nerede oldu? Problem sonucu nedir?	
Problemi çözmek üzerine nasıl bir eylem alınmış görülmüştür?	

İmza:

Tarix:



33



Şikayet Kapatma Formu

[illegible]

TAZMİNAT VE SON AŞAMALAR

Bu kısım, şikayetçi tazminat ücretini aldıktan ve şikayetinin giderilmesinin ardından doldurulacak ve imzalanacaktır.

Notlar:

Adı-Soyadı ve Şikayetçinin İmzası

Sorumlu Kurum/Şirket Temsilcisinin
Unvanı-Adı-Soyadı ve İmzası

- Şikayetler, talepler ve ilgili olaylara ilişkin aylık özdetler, düzeltici/önleyici faaliyetlerin uygulanma durumunu ile birlikte, inşaat aşamasında Yüklenci tarafından, işletme aşamasında ise Belediye tarafından hazırlanacaktır.
- Aylık Çevresel ve Sosyal İzleme Raporları (ÇSİR), Yüklenci tarafından hazırlanarak Belediye'ye sunulacaktır. Belediye tarafından hazırlanacak üç aylık ÇSİR'ler ve alt projeye ilişkin altı aylık ilerleme Raporları, Şikayet Kayıtları ile birlikte İLBANK'a iletilecektir.
- Altı aylık ÇSİR'ler ve alt proje ilerleme Raporları ise İLBANK tarafından hazırlanarak DB'ye sunulacaktır. Bu raporlar, belirli dönemde gerçekleştirilen sağlık, güvenlik, çevre ve sosyal konuların yönetimi, şikayet mekanizması ve paydaş katılım faaliyetlerine ilişkin alt projenin performansının özdetini içerecektir.



34

